



## Foxglove II

**Front Elevation** (1,510 sq.ft. / 42'-3" x 53'-0")

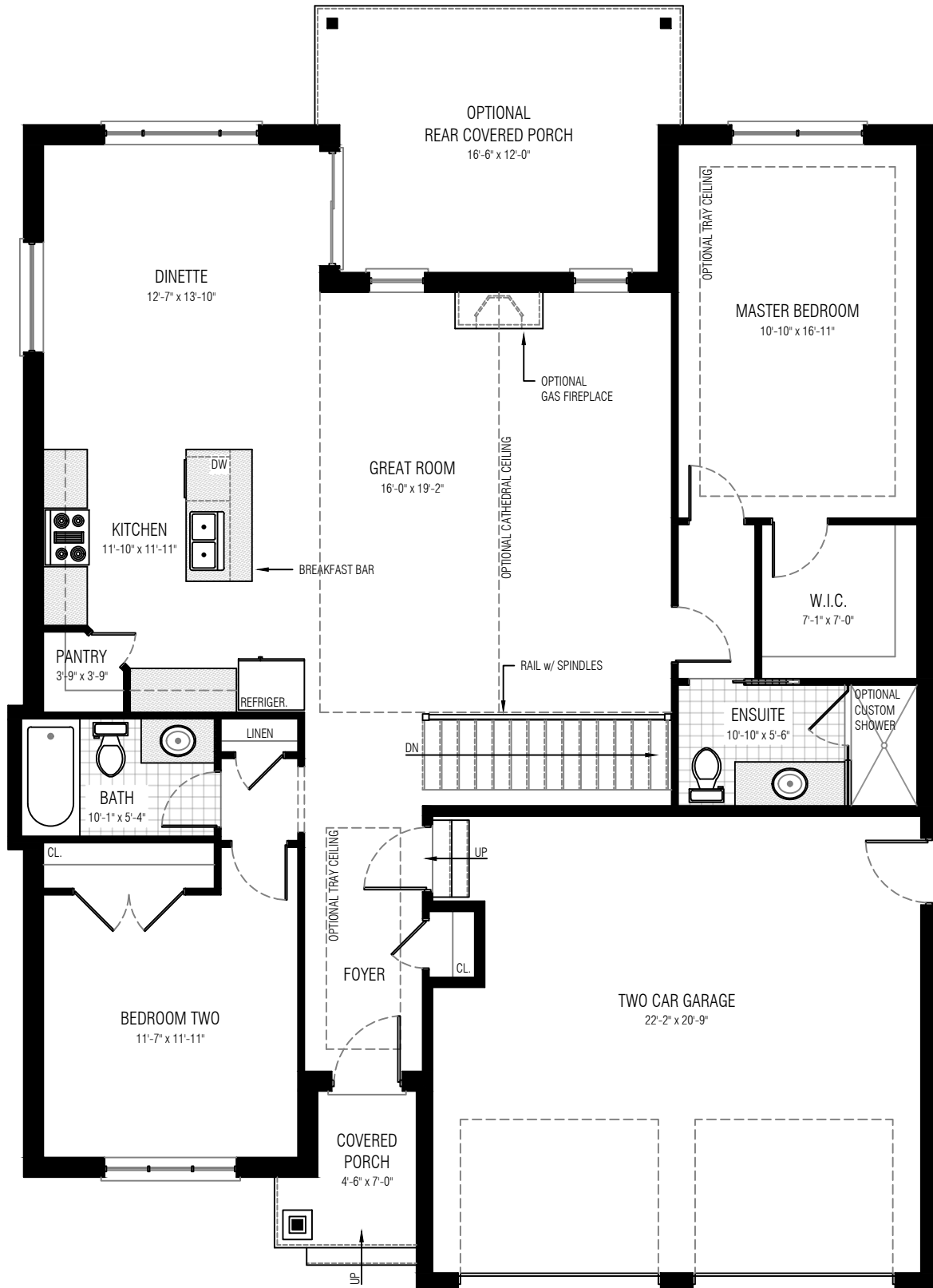
This picture is an artists representation. Please refer to a sales representative for upgraded options.

This plan and any pricing is the property of DHP Homes. They are not to be duplicated in any way. Plans and specifications are approximate, and are subject to change without notice.



Copyright 2020

[www.dhphomes.com](http://www.dhphomes.com)



## Foxglove II

**Main Floor Plan - 'A' (1,510 sq.ft. / 42'-3" x 53'-0" / 9'-0" Ceilings)**

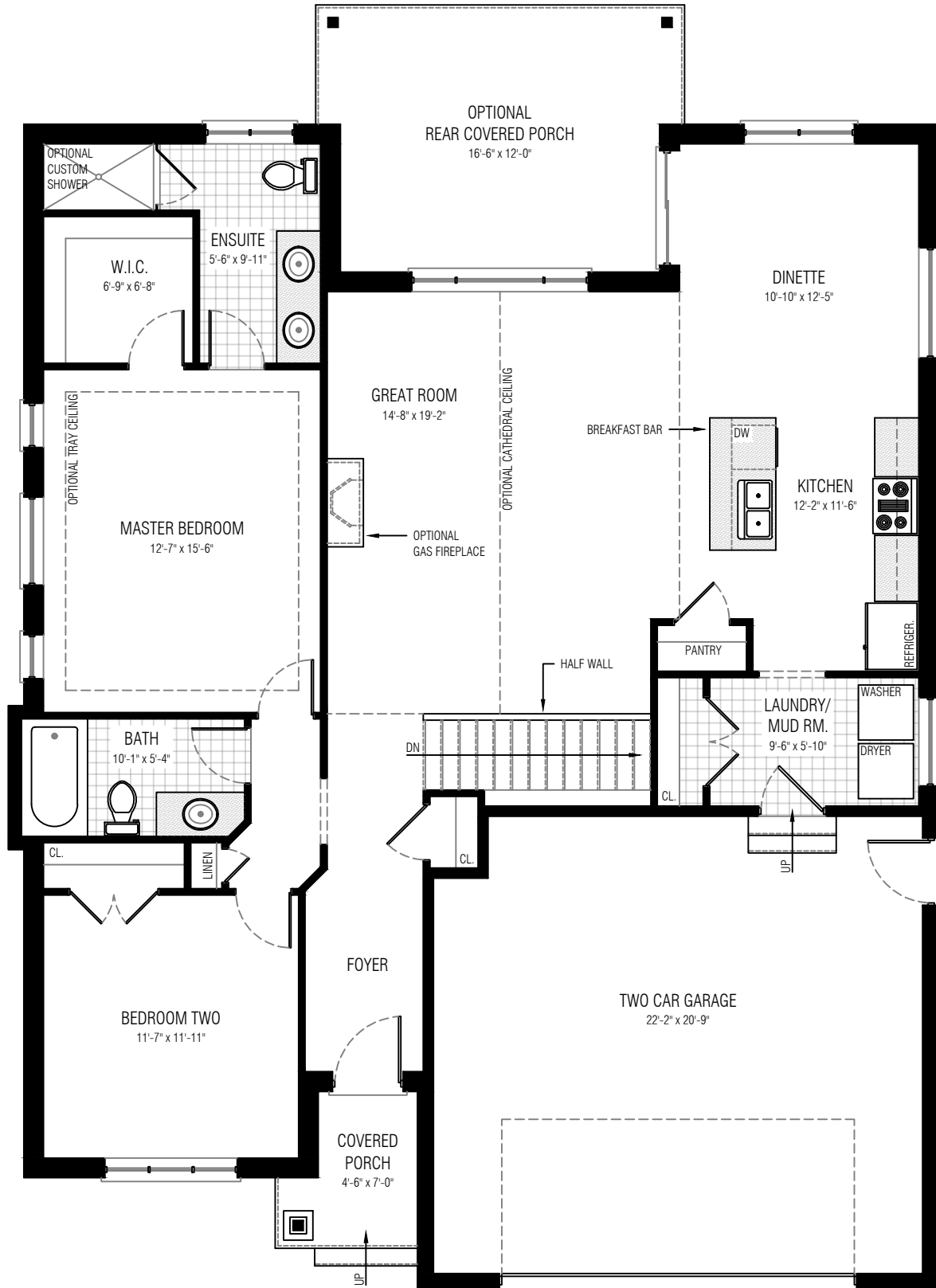
This picture is an artists representation. Please refer to a sales representative for upgraded options.

This plan and any pricing is the property of DHP Homes. They are not to be duplicated in any way. Plans and specifications are approximate, and are subject to change without notice.

Copyright 2020



[www.dhphomes.com](http://www.dhphomes.com)



## Foxglove II

**Main Floor Plan - 'B'** (1,510 sq.ft. / 42'-3" x 53'-0" / 9'-0" Ceilings)

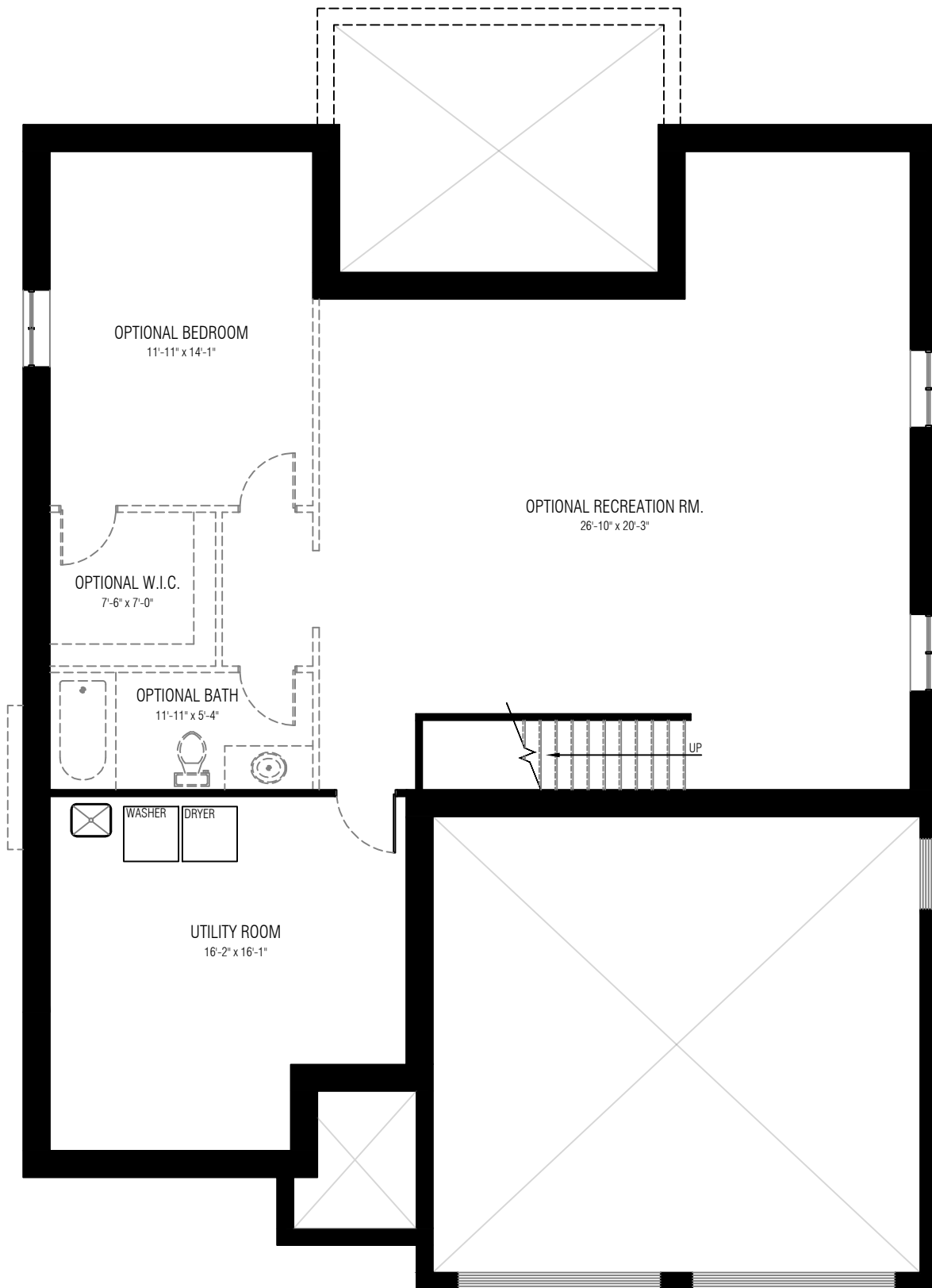
This picture is an artists representation. Please refer to a sales representative for upgraded options.

This plan and any pricing is the property of DHP Homes. They are not to be duplicated in any way. Plans and specifications are approximate, and are subject to change without notice.



Copyright 2020

[www.dhphomes.com](http://www.dhphomes.com)



## Foxglove II

**Lower Level Plan (1,510 sq.ft. / 42'-3" x 53'-0")**

This picture is an artists representation. Please refer to a sales representative for upgraded options.

This plan and any pricing is the property of DHP Homes. They are not to be duplicated in any way. Plans and specifications are approximate, and are subject to change without notice.

Copyright 2020



[www.dhphomes.com](http://www.dhphomes.com)