



Foxglove III

Front Elevation (1,635 sq.ft. / 42'-3" x 56'-0")

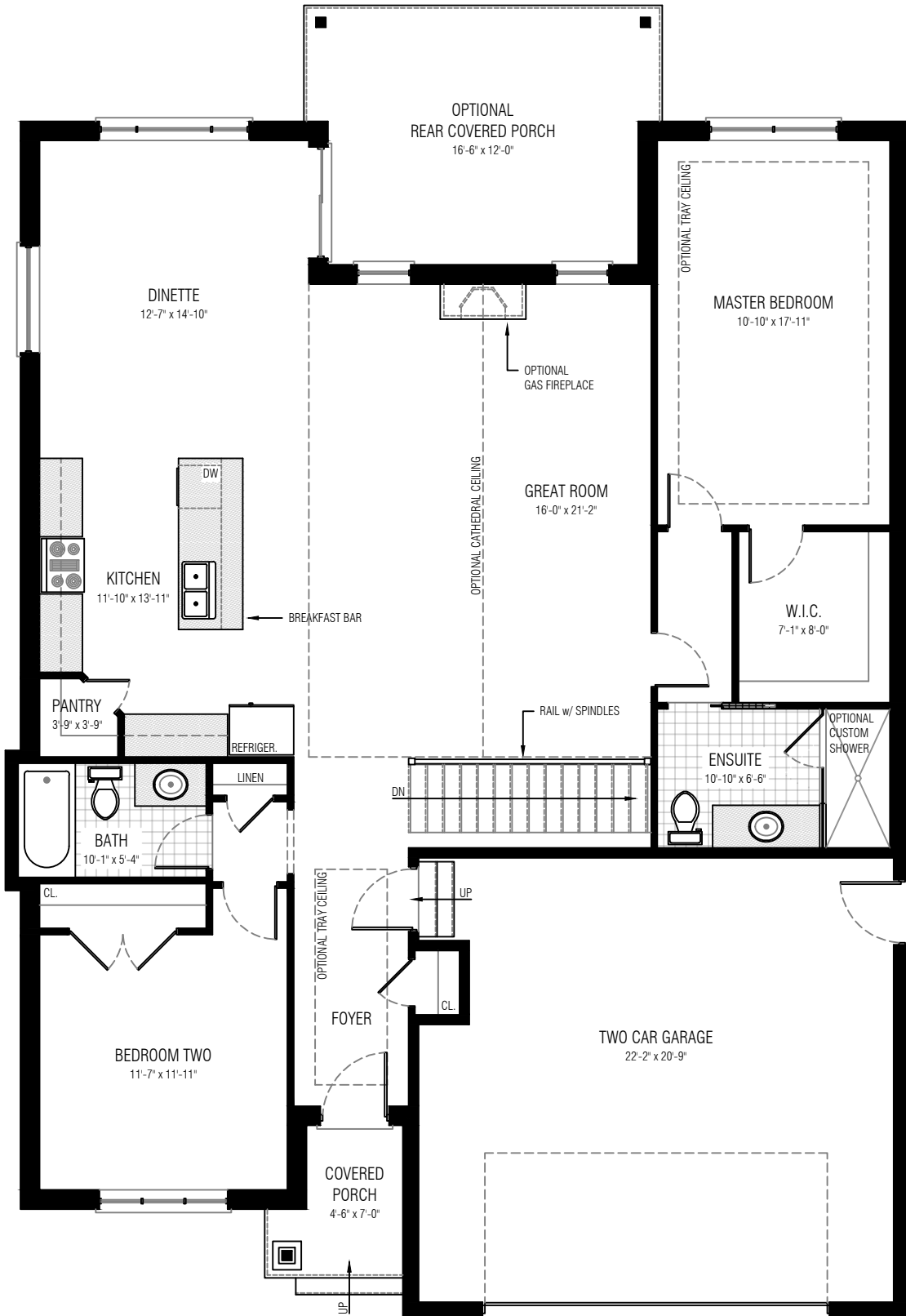
This picture is an artists representation. Please refer to a sales representative for upgraded options.

This plan and any pricing is the property of DHP Homes. They are not to be duplicated in any way. Plans and specifications are approximate, and are subject to change without notice.



Copyright 2020

www.dhphomes.com



Foxglove III

Main Floor Plan (1,635 sq.ft. / 42'-3" x 56'-0" / 9'-0" Ceilings)

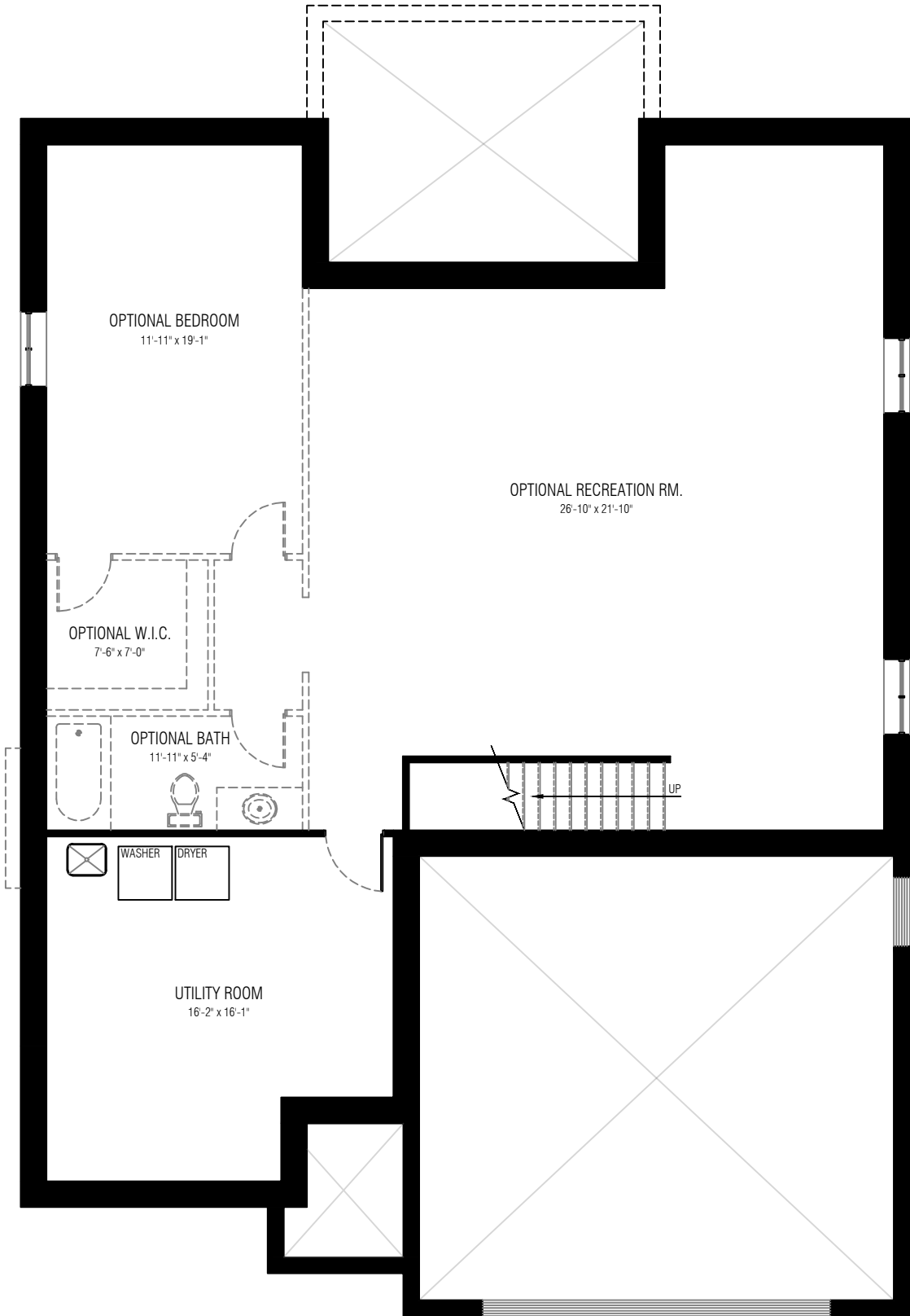
This picture is an artists representation. Please refer to a sales representative for upgraded options.

This plan and any pricing is the property of DHP Homes. They are not to be duplicated in any way. Plans and specifications are approximate, and are subject to change without notice.



Copyright 2020

www.dhphomes.com



Foxglove III

Lower Level Plan (1,635 sq.ft. / 42'-3" x 56'-0")

This picture is an artists representation. Please refer to a sales representative for upgraded options.

This plan and any pricing is the property of DHP Homes. They are not to be duplicated in any way. Plans and specifications are approximate, and are subject to change without notice.

Copyright 2020



www.dhphomes.com