



Lot 70 - Boardwalk Way, Dorchester

Inglewood

Front Elevation (2,110 sq.ft. / 44'-0" x 45'-9")

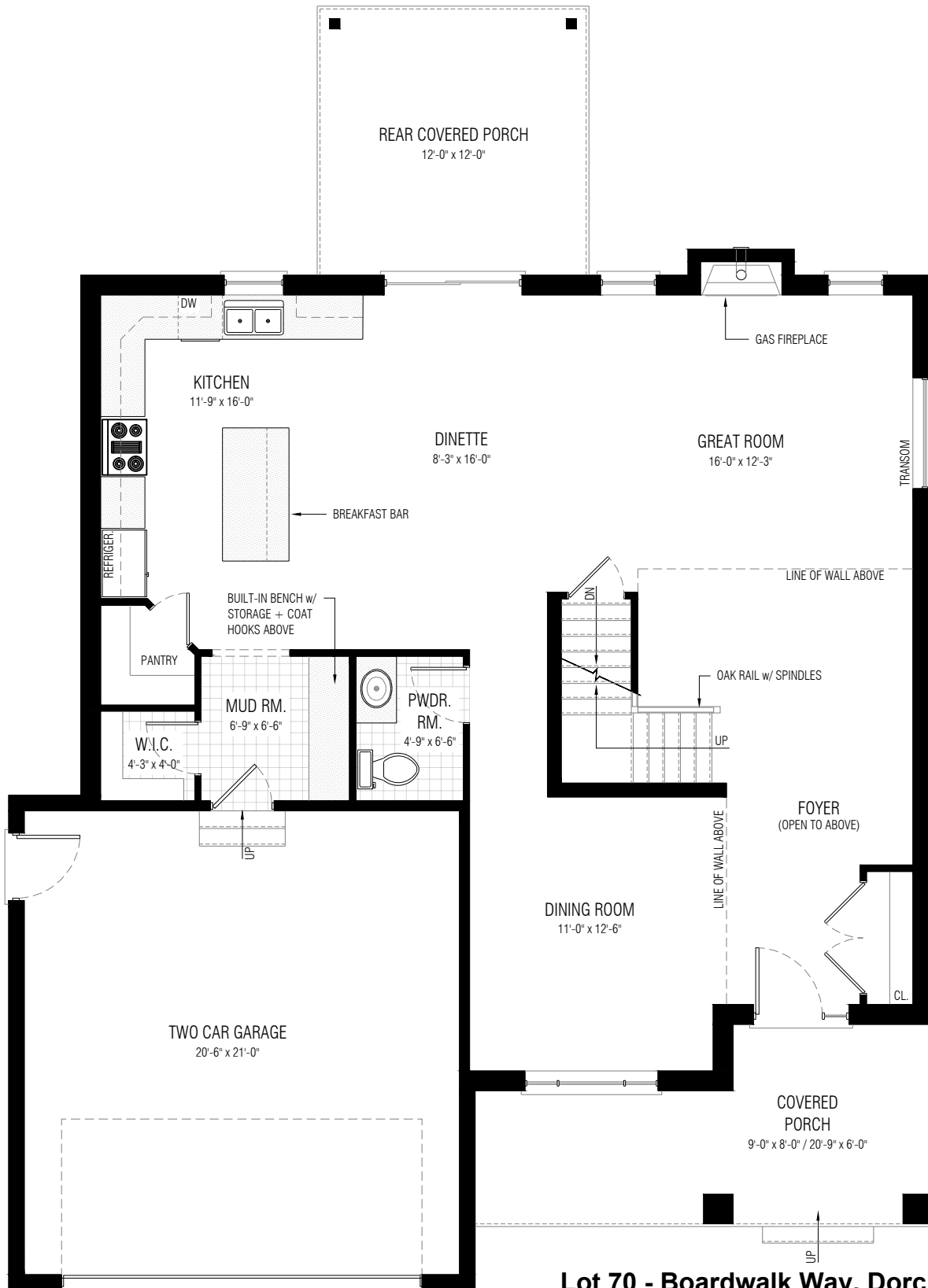
This picture is an artists representation. Please refer to a sales representative for upgraded options.

This plan and any pricing is the property of DHP Homes. They are not to be duplicated in any way. Plans and specifications are approximate, and are subject to change without notice.



Copyright 2020

www.dhphomes.com



Lot 70 - Boardwalk Way, Dorchester

Inglewood

Main Floor Plan (2,110 sq.ft. / 44'-0" x 45'-9" - 9'-0" Ceilings)

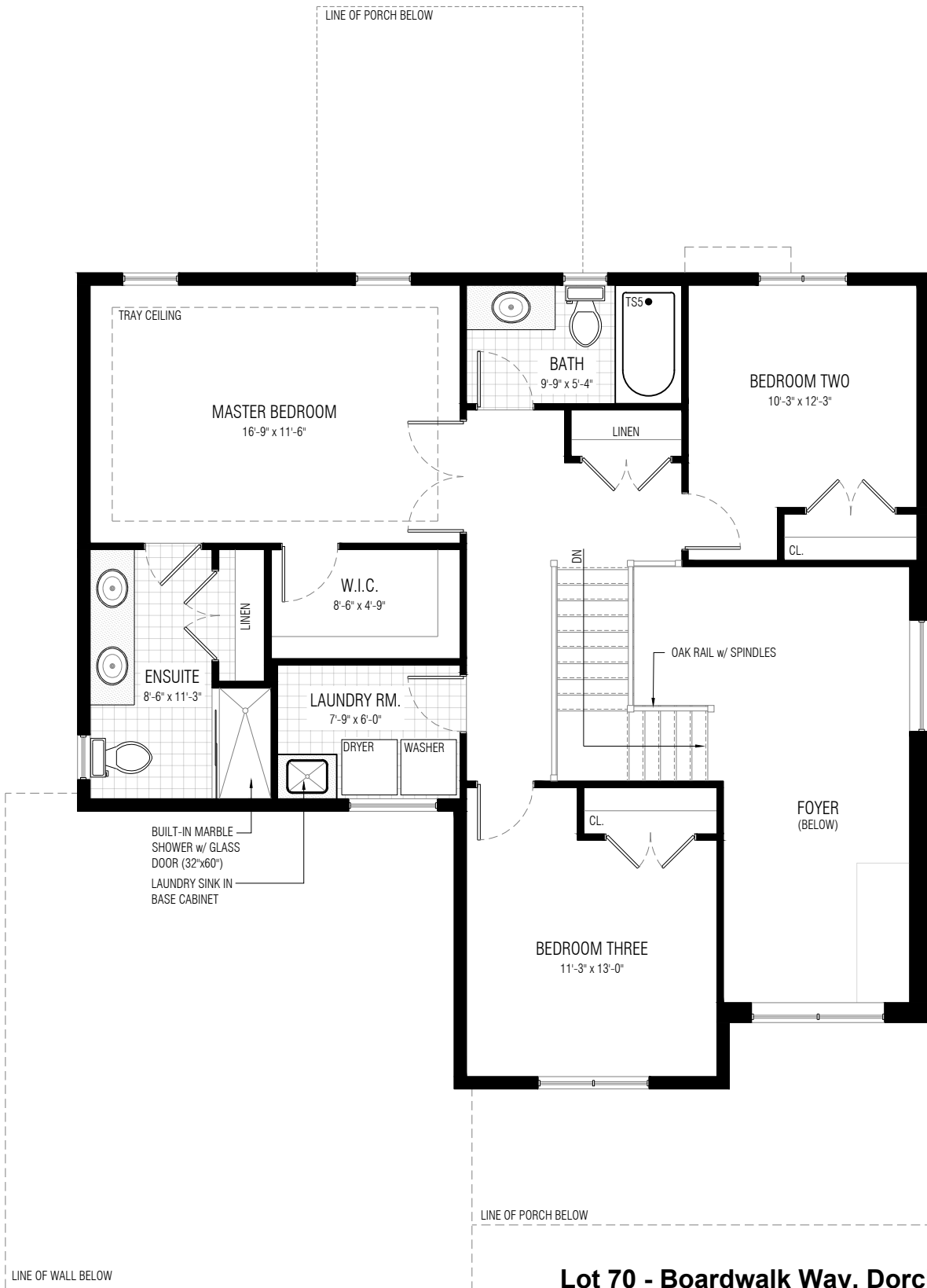
This picture is an artists representation. Please refer to a sales representative for upgraded options.

This plan and any pricing is the property of DHP Homes. They are not to be duplicated in any way. Plans and specifications are approximate, and are subject to change without notice.



Copyright 2020

www.dhphomes.com



Lot 70 - Boardwalk Way, Dorchester

Inglewood

Second Floor Plan (2,110 sq.ft. / 44'-0" x 45'-9" - 8'-0" Ceilings)

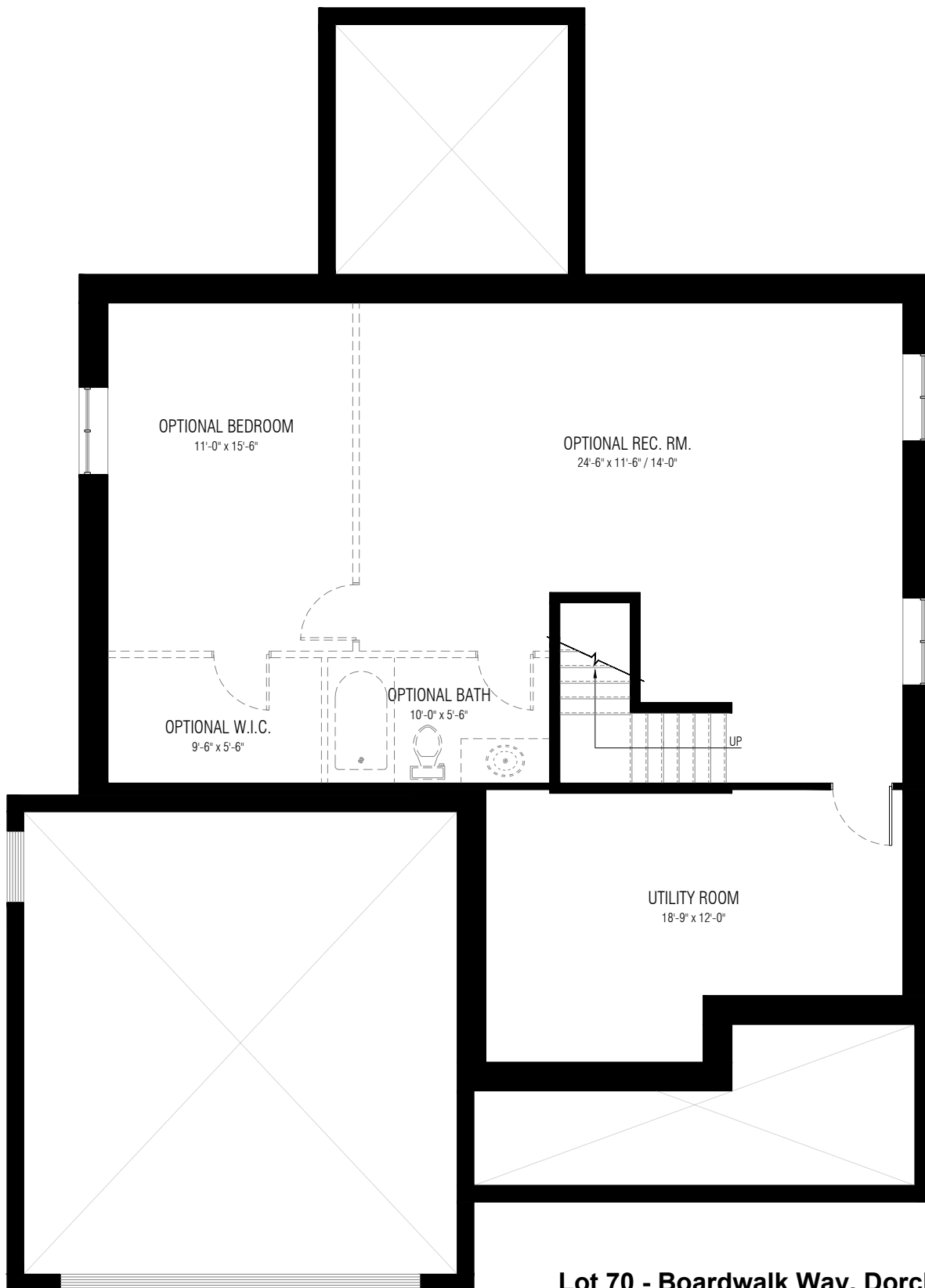
This picture is an artists representation. Please refer to a sales representative for upgraded options.

This plan and any pricing is the property of DHP Homes. They are not to be duplicated in any way. Plans and specifications are approximate, and are subject to change without notice.



Copyright 2020

www.dhphomes.com



Lot 70 - Boardwalk Way, Dorchester

Inglewood

Lower Level Plan (2,110 sq.ft. / 44'-0" x 45'-9")

This picture is an artists representation. Please refer to a sales representative for upgraded options.

This plan and any pricing is the property of DHP Homes. They are not to be duplicated in any way. Plans and specifications are approximate, and are subject to change without notice.



Copyright 2020

www.dhphomes.com