



Clearbrook

Front Elevation (1,870 sq.ft. / 52'-0" x 52'-6")

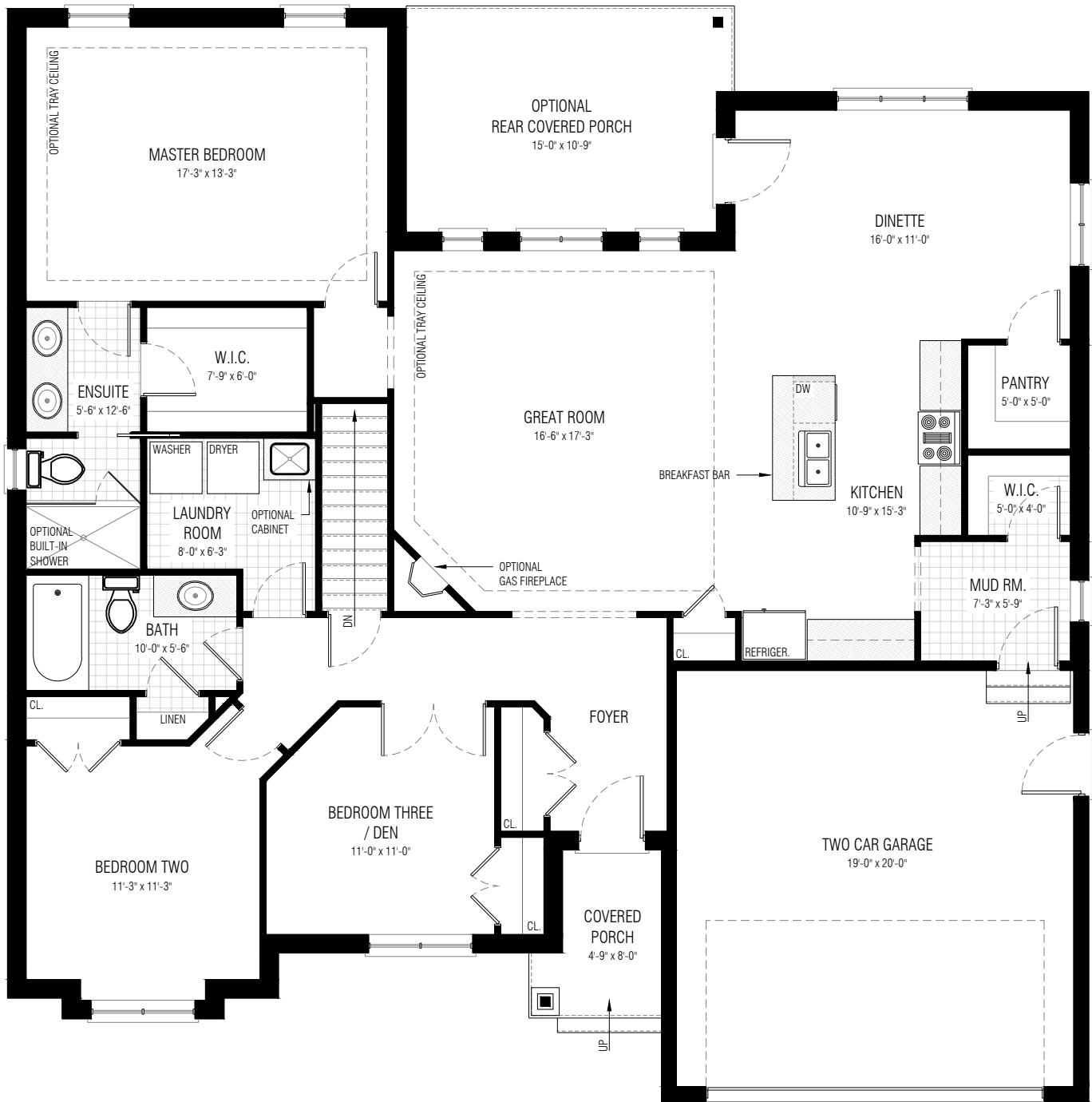
This picture is an artists representation. Please refer to a sales representative for upgraded options.

This plan and any pricing is the property of DHP Homes. They are not to be duplicated in any way. Plans and specifications are approximate, and are subject to change without notice.



Copyright 2020

www.dhphomes.com



Clearbrook

Main Floor Plan (1,870 sq.ft. / 52'-0" x 52'-6" / 9'-0" Ceilings)

This picture is an artists representation. Please refer to a sales representative for upgraded options.

This plan and any pricing is the property of DHP Homes. They are not to be duplicated in any way. Plans and specifications are approximate, and are subject to change without notice.



Copyright 2020

www.dhphomes.com



Clearbrook

Lower Level Plan (1,870 sq.ft. / 52'-0" x 52'-6")

This picture is an artists representation. Please refer to a sales representative for upgraded options.

This plan and any pricing is the property of DHP Homes. They are not to be duplicated in any way. Plans and specifications are approximate, and are subject to change without notice.



Copyright 2020

www.dhphomes.com