



## Highgrove

**Front Elevation** (3,605 sq.ft. / 51'-0" x 60'-3")

This picture is an artists representation. Please refer to a sales representative for upgraded options.

This plan and any pricing is the property of DHP Homes. They are not to be duplicated in any way. Plans and specifications are approximate, and are subject to change without notice.



Copyright 2020

[www.dhphomes.com](http://www.dhphomes.com)



# Highgrove

**Main Floor Plan (3,605 sq.ft. / 51'-0" x 60'-3" - 9'-0" ceilings)**

This picture is an artists representation. Please refer to a sales representative for upgraded options.

This plan and any pricing is the property of DHP Homes. They are not to be duplicated in any way. Plans and specifications are approximate, and are subject to change without notice.



Copyright 2020

[www.dhphomes.com](http://www.dhphomes.com)



# Highgrove

**Second Floor Plan (3,605 sq.ft. / 51'-0" x 60'-3")**

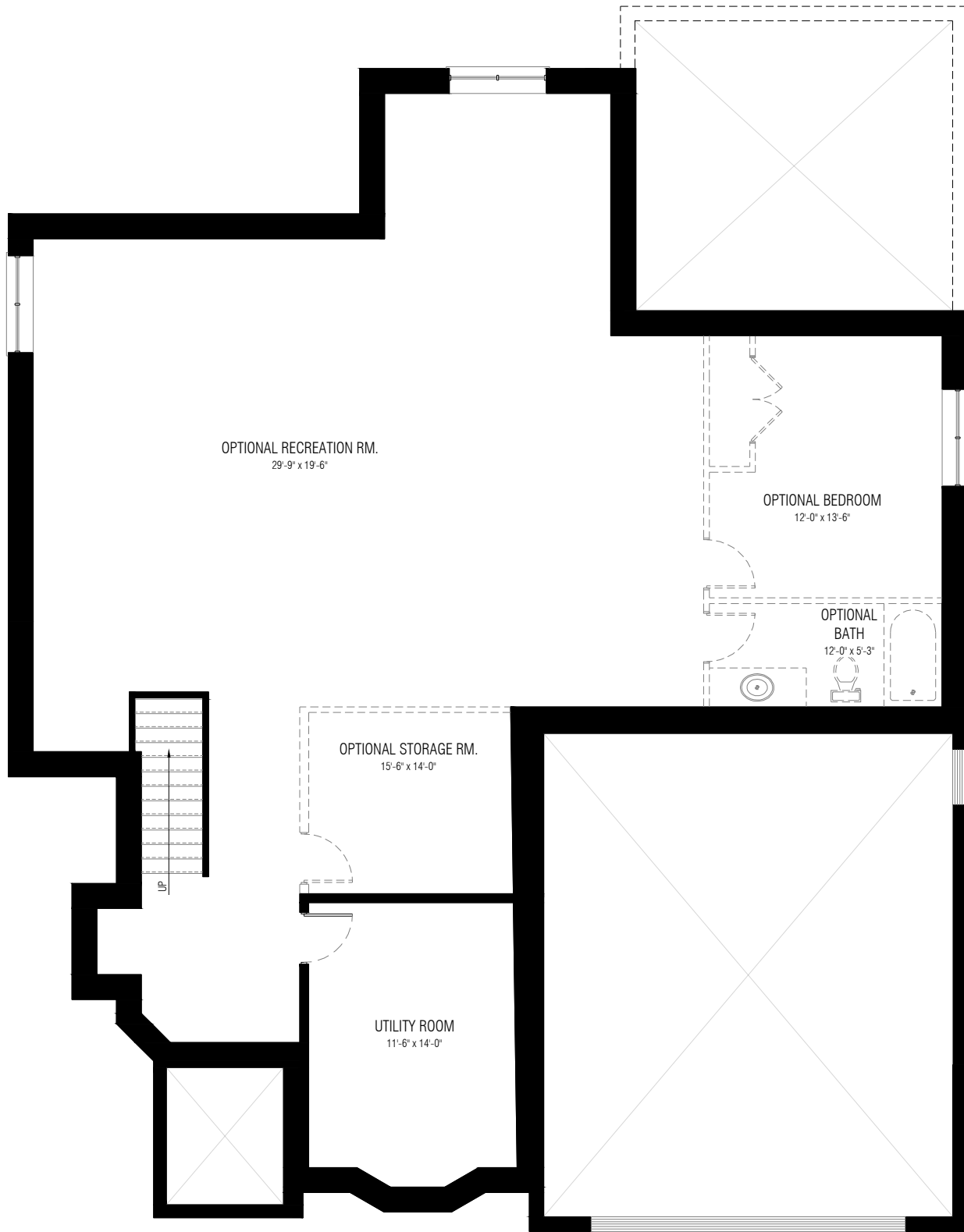
This picture is an artists representation. Please refer to a sales representative for upgraded options.

This plan and any pricing is the property of DHP Homes. They are not to be duplicated in any way. Plans and specifications are approximate, and are subject to change without notice.



Copyright 2020

[www.dhphomes.com](http://www.dhphomes.com)



# Highgrove

**Lower Level Plan (3,605 sq.ft. / 51'-0" x 60'-3")**

This picture is an artists representation. Please refer to a sales representative for upgraded options.

This plan and any pricing is the property of DHP Homes. They are not to be duplicated in any way. Plans and specifications are approximate, and are subject to change without notice.



Copyright 2020

[www.dhphomes.com](http://www.dhphomes.com)