



## Ponderosa Pine

**Front Elevation** (2,520 sq.ft. / 48'-0" x 47'-9")

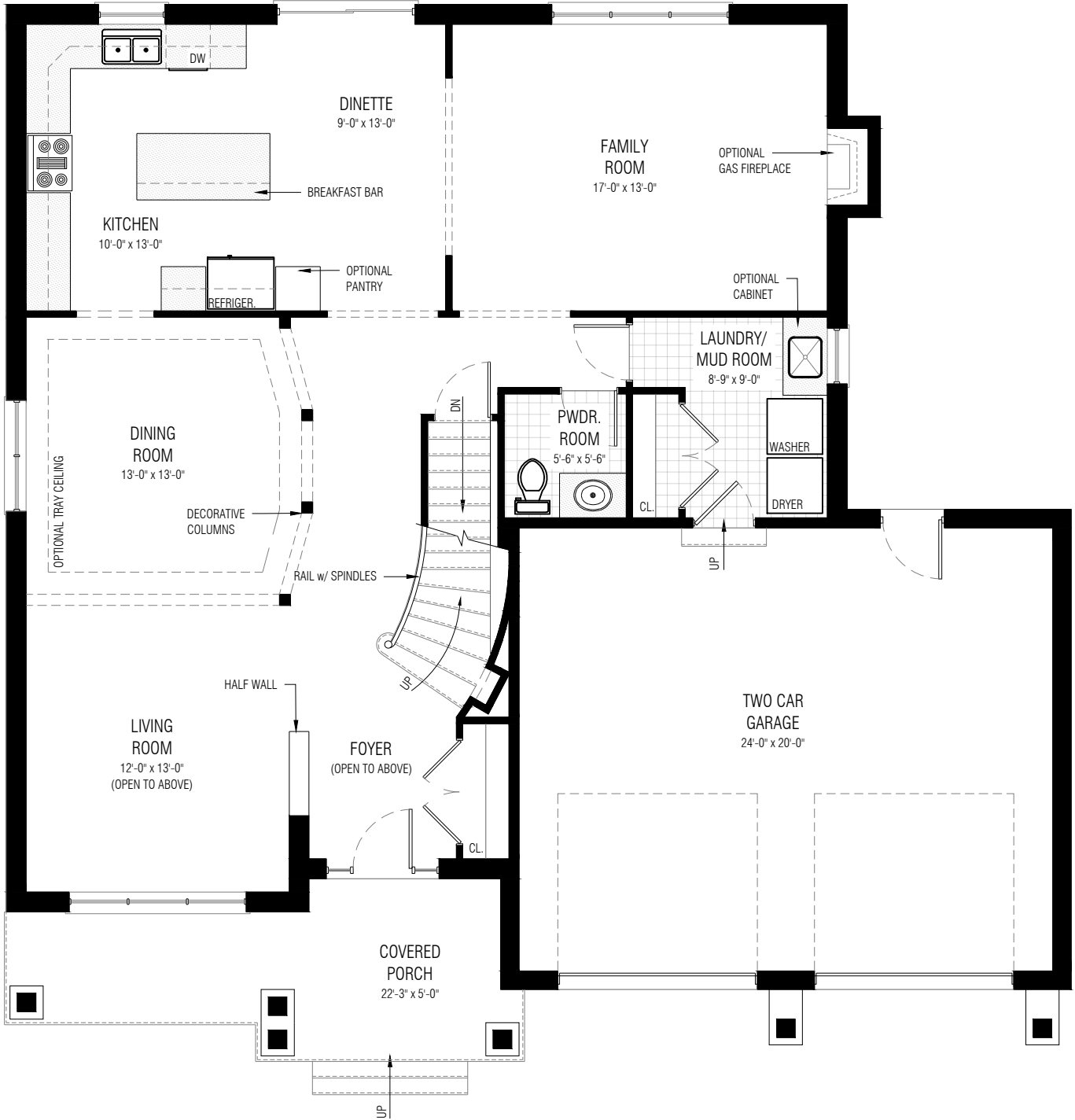
This picture is an artists representation. Please refer to a sales representative for upgraded options.

This plan and any pricing is the property of DHP Homes. They are not to be duplicated in any way. Plans and specifications are approximate, and are subject to change without notice.



Copyright 2020

[www.dhphomes.com](http://www.dhphomes.com)



# Ponderosa Pine

**Main Floor Plan (2,520 sq.ft. / 48'-0" x 47'-9" - 9'-0" ceilings)**

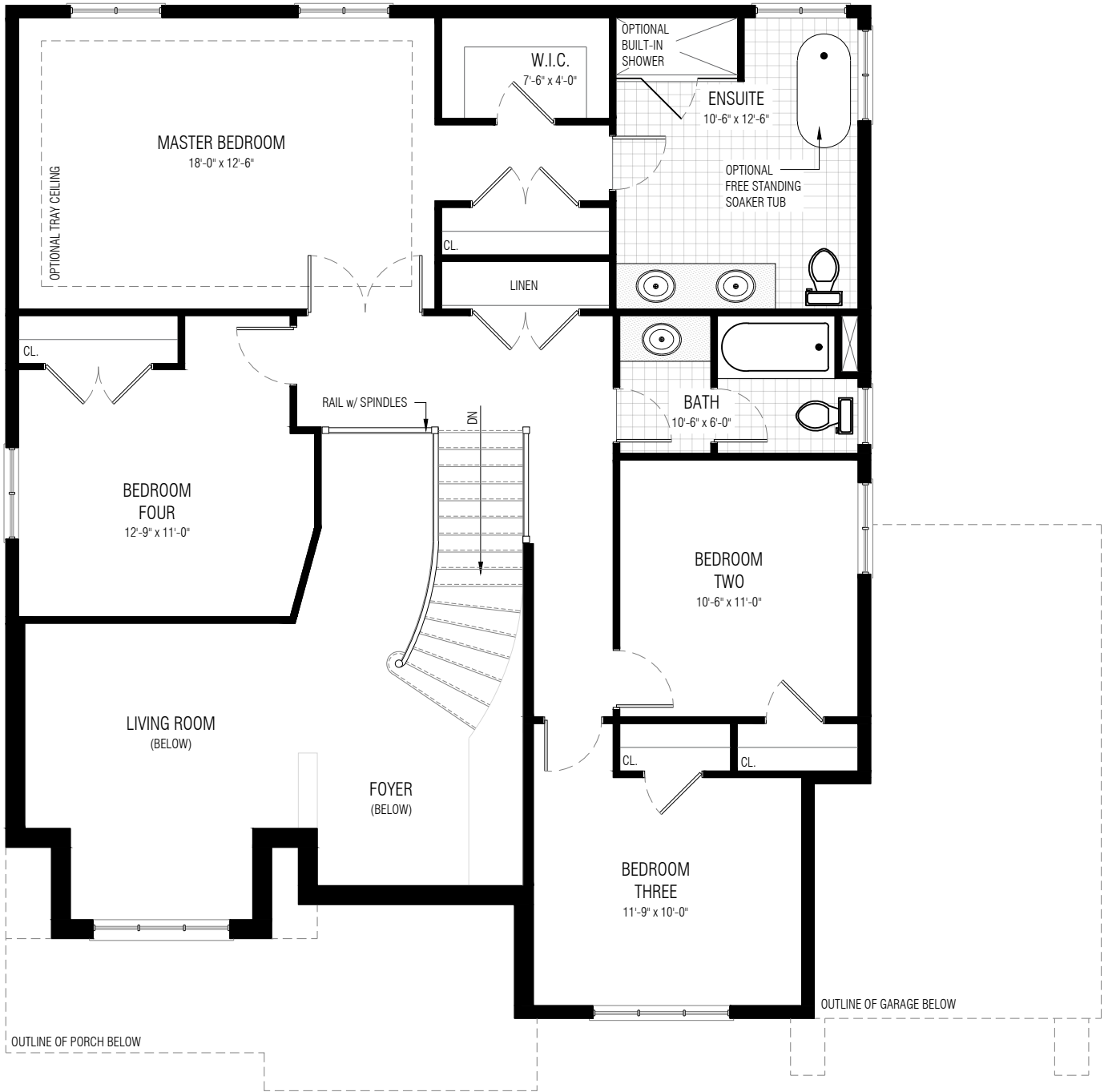
This picture is an artists representation. Please refer to a sales representative for upgraded options.

This plan and any pricing is the property of DHP Homes. They are not to be duplicated in any way. Plans and specifications are approximate, and are subject to change without notice.



Copyright 2020

[www.dhphomes.com](http://www.dhphomes.com)



# Ponderosa Pine

**Second Floor Plan (2,520 sq.ft. / 48'-0" x 47'-9")**

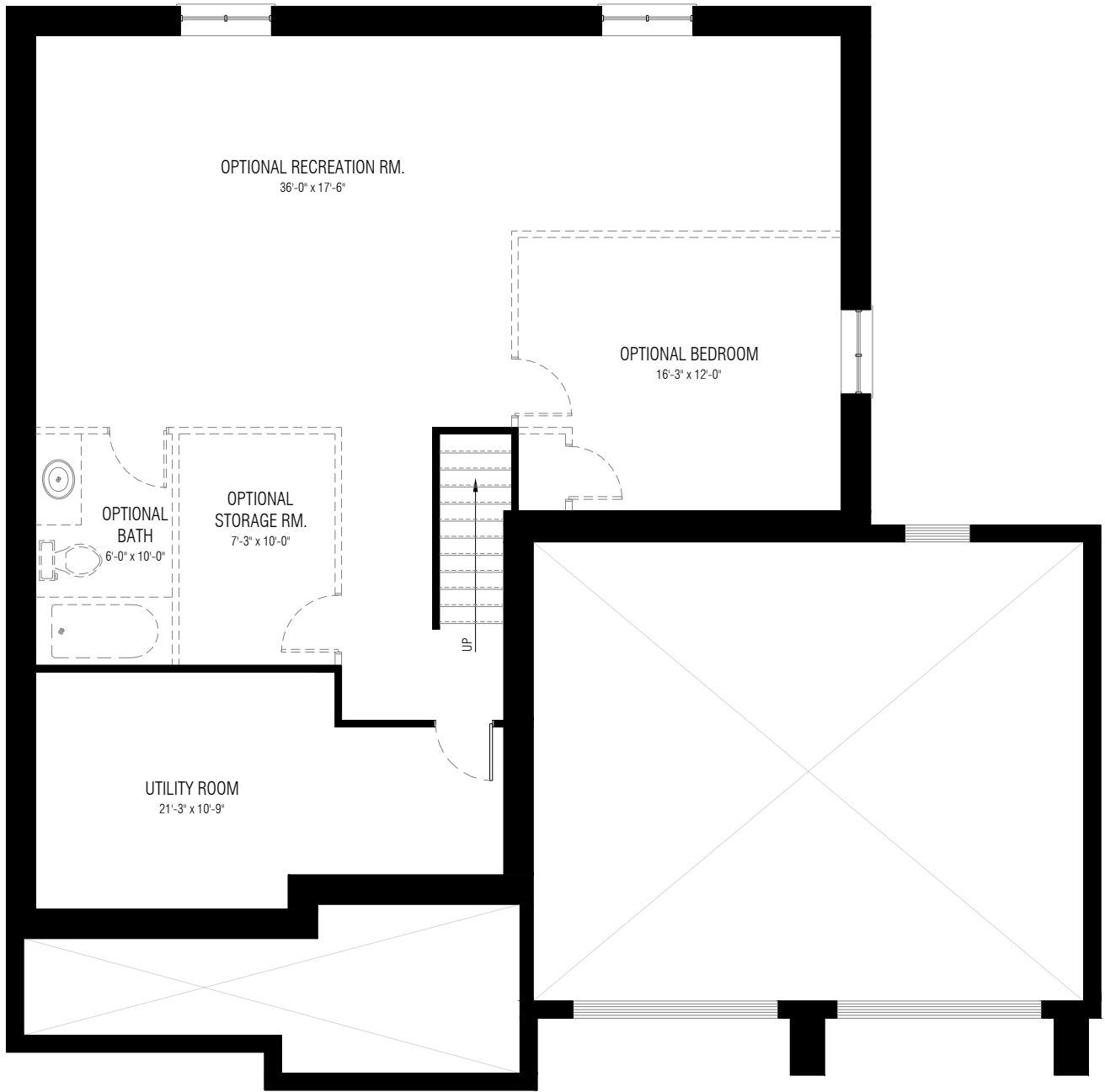
This picture is an artists representation. Please refer to a sales representative for upgraded options.

This plan and any pricing is the property of DHP Homes. They are not to be duplicated in any way. Plans and specifications are approximate, and are subject to change without notice.



Copyright 2020

[www.dhphomes.com](http://www.dhphomes.com)



## Ponderosa Pine

Lower Level Plan (2,520 sq.ft. / 48'-0" x 47'-9")

This picture is an artists representation. Please refer to a sales representative for upgraded options.

This plan and any pricing is the property of DHP Homes. They are not to be duplicated in any way. Plans and specifications are approximate, and are subject to change without notice.

Copyright 2020



[www.dhphomes.com](http://www.dhphomes.com)