



# BLACKWOOD

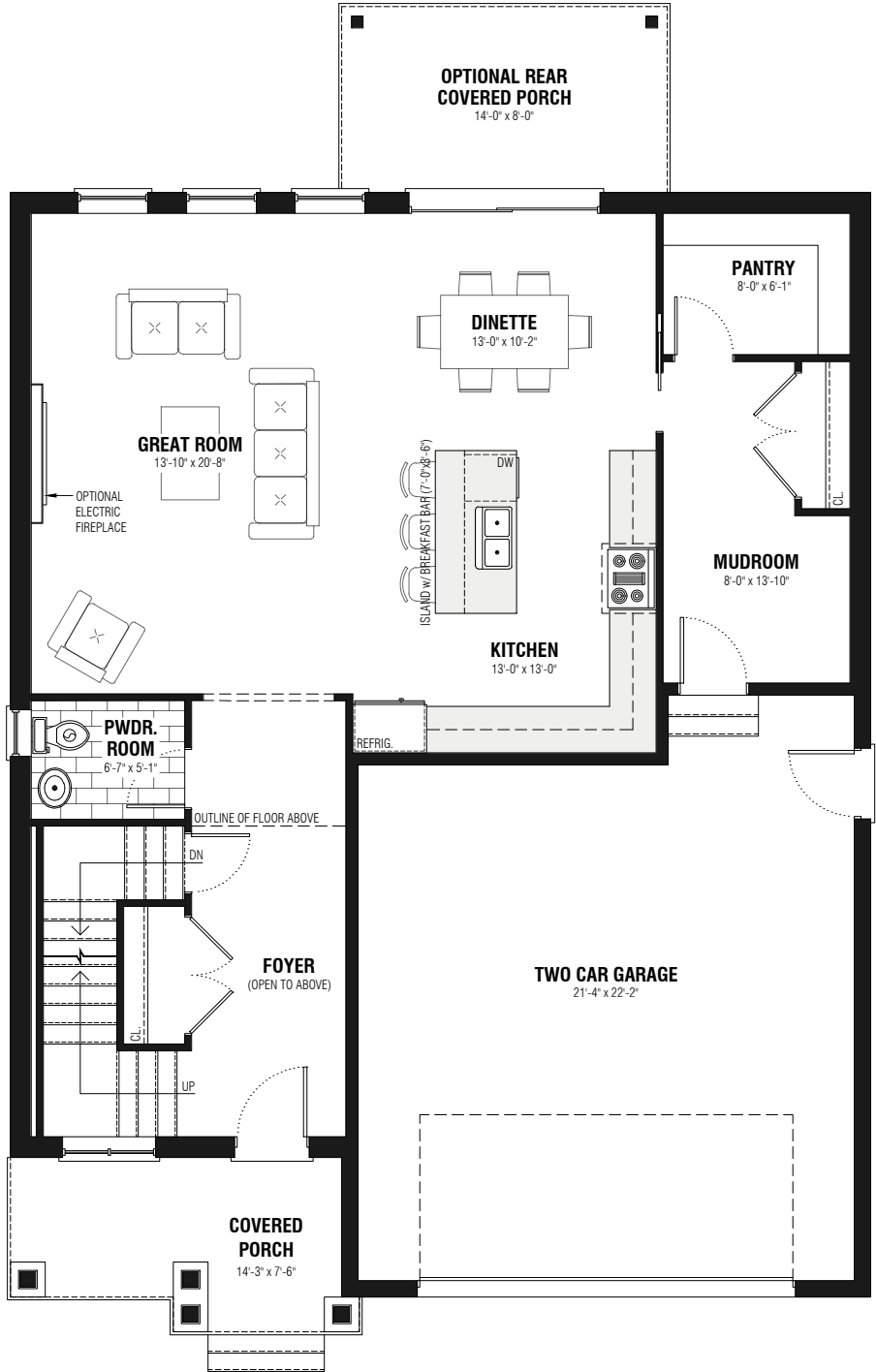
**Front Elevation**  
(2,572 sq.ft. / 37'-0" x 57'-0")

This picture is an artists representation. Please refer to a sales representative for upgraded options. This plan and any pricing is the property of DHP Homes. They are not to be duplicated in any way. Plans and specifications are approximate, and are subject to change without notice.

Copyright 2022



[dphomes.com](http://dphomes.com) | 519-633-8820



# BLACKWOOD

## Main Level Floor Plan

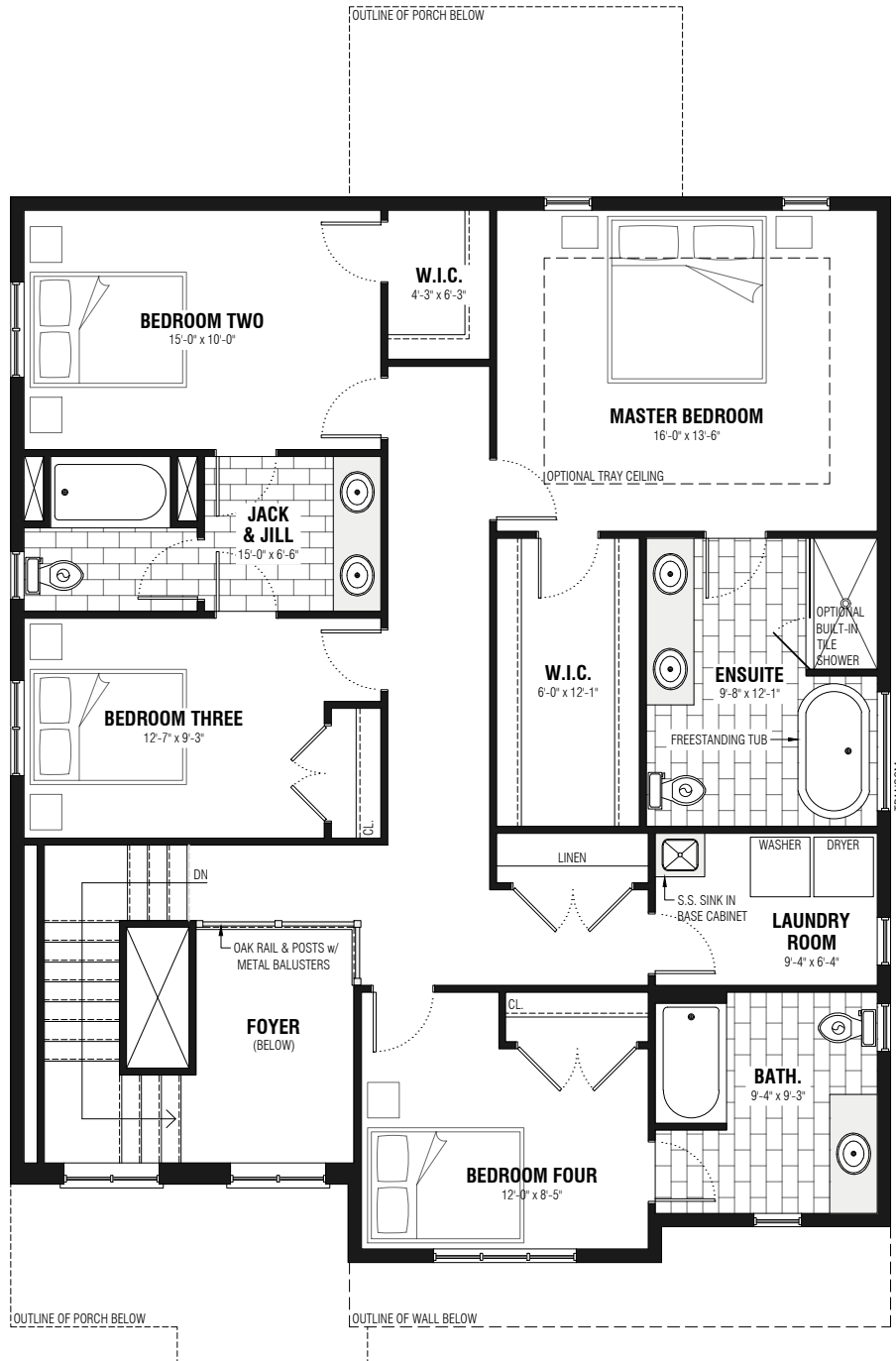
(1,137 sq.ft. / 37'-0" x 57'-0")

This picture is an artists representation. Please refer to a sales representative for upgraded options. This plan and any pricing is the property of DHP Homes. They are not to be duplicated in any way. Plans and specifications are approximate, and are subject to change without notice.

Copyright 2022



[dphomes.com](http://dphomes.com) | 519-633-8820



# BLACKWOOD

## Second Level Floor Plan

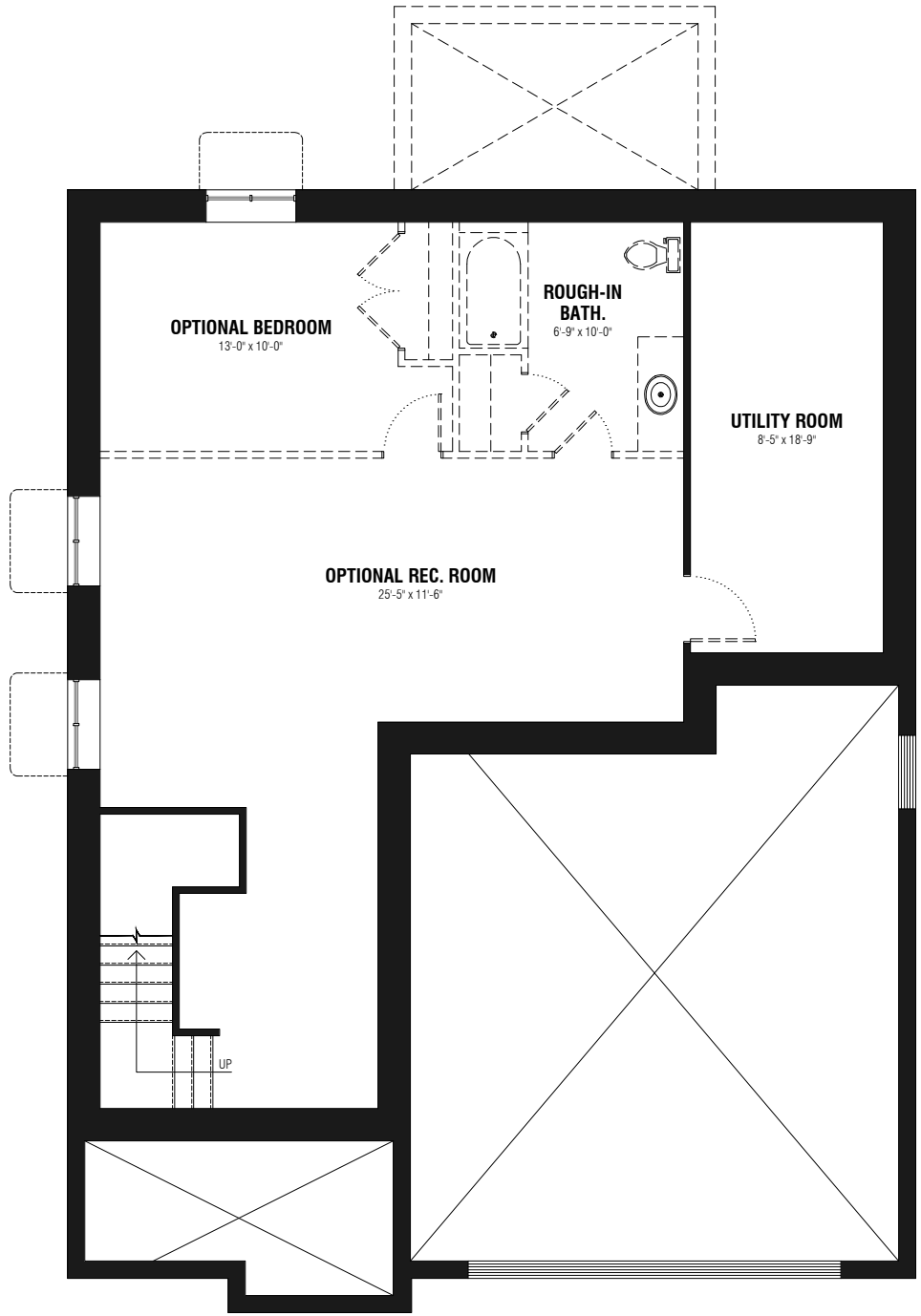
(1,435 sq.ft. / 37'-0" x 57'-0")

This picture is an artists representation. Please refer to a sales representative for upgraded options. This plan and any pricing is the property of DHP Homes. They are not to be duplicated in any way. Plans and specifications are approximate, and are subject to change without notice.

Copyright 2022



dphomes.com | 519-633-8820



# BLACKWOOD

**Lower Level Floor Plan**  
 (Opt. 765 sq.ft. / 37'-0" x 57'-0")

This picture is an artists representation. Please refer to a sales representative for upgraded options. This plan and any pricing is the property of DHP Homes. They are not to be duplicated in any way. Plans and specifications are approximate, and are subject to change without notice.

Copyright 2022



[dphomes.com](http://dphomes.com) | 519-633-8820