



## INGLEWOOD III

### Front Elevation

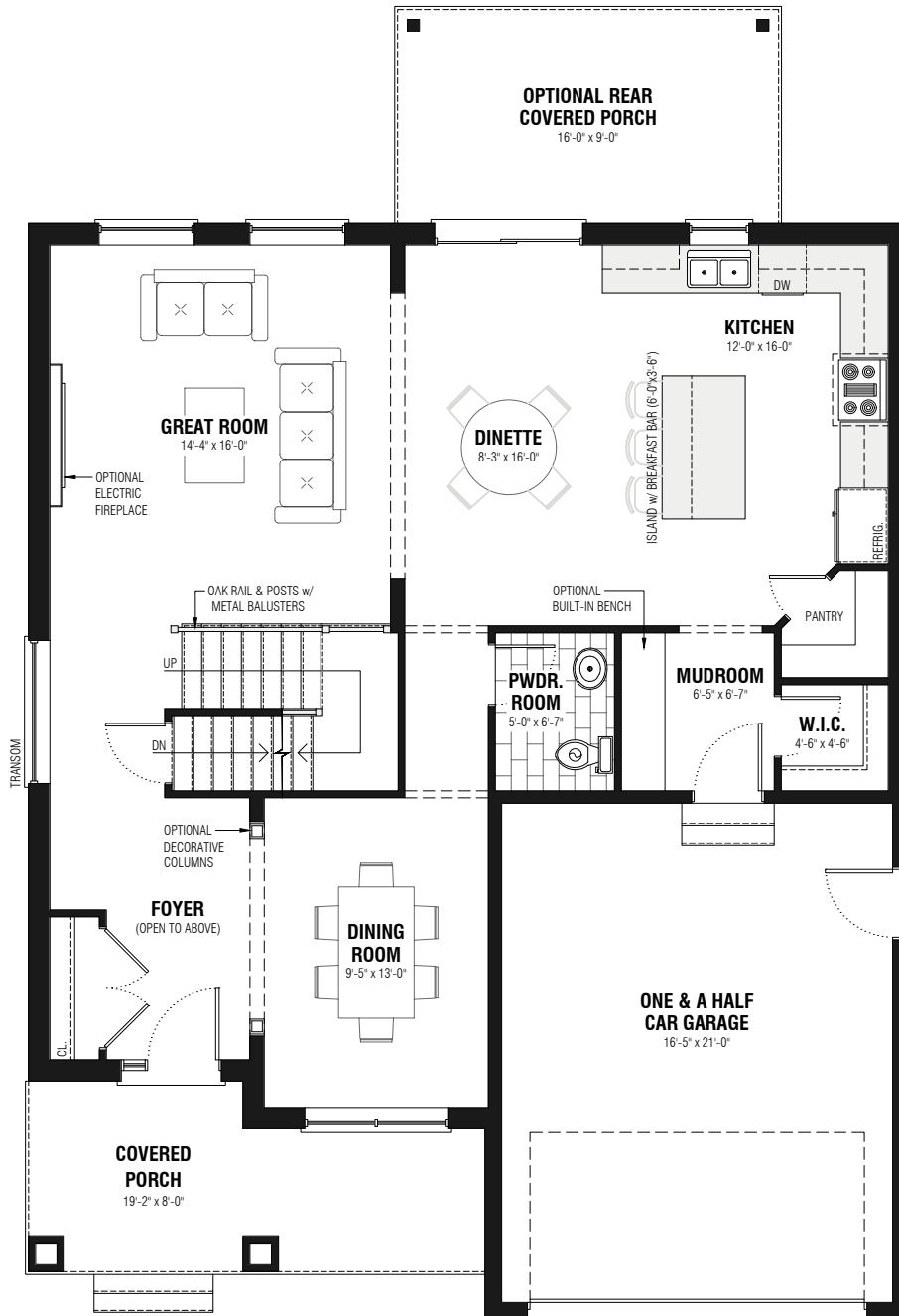
(2,150 sq.ft. / 37'-0" x 55'-0")

This picture is an artists representation. Please refer to a sales representative for upgraded options. This plan and any pricing is the property of DHP Homes. They are not to be duplicated in any way. Plans and specifications are approximate, and are subject to change without notice.

Copyright 2022



[dphomes.com](http://dphomes.com) | 519-633-8820



# INGLEWOOD III

**Main Level Floor Plan**  
 (1,155 sq.ft. / 37'-0" x 55'-0")

This picture is an artists representation. Please refer to a sales representative for upgraded options. This plan and any pricing is the property of DHP Homes. They are not to be duplicated in any way. Plans and specifications are approximate, and are subject to change without notice.

Copyright 2022



[dphomes.com](http://dphomes.com) | 519-633-8820



# INGLEWOOD III

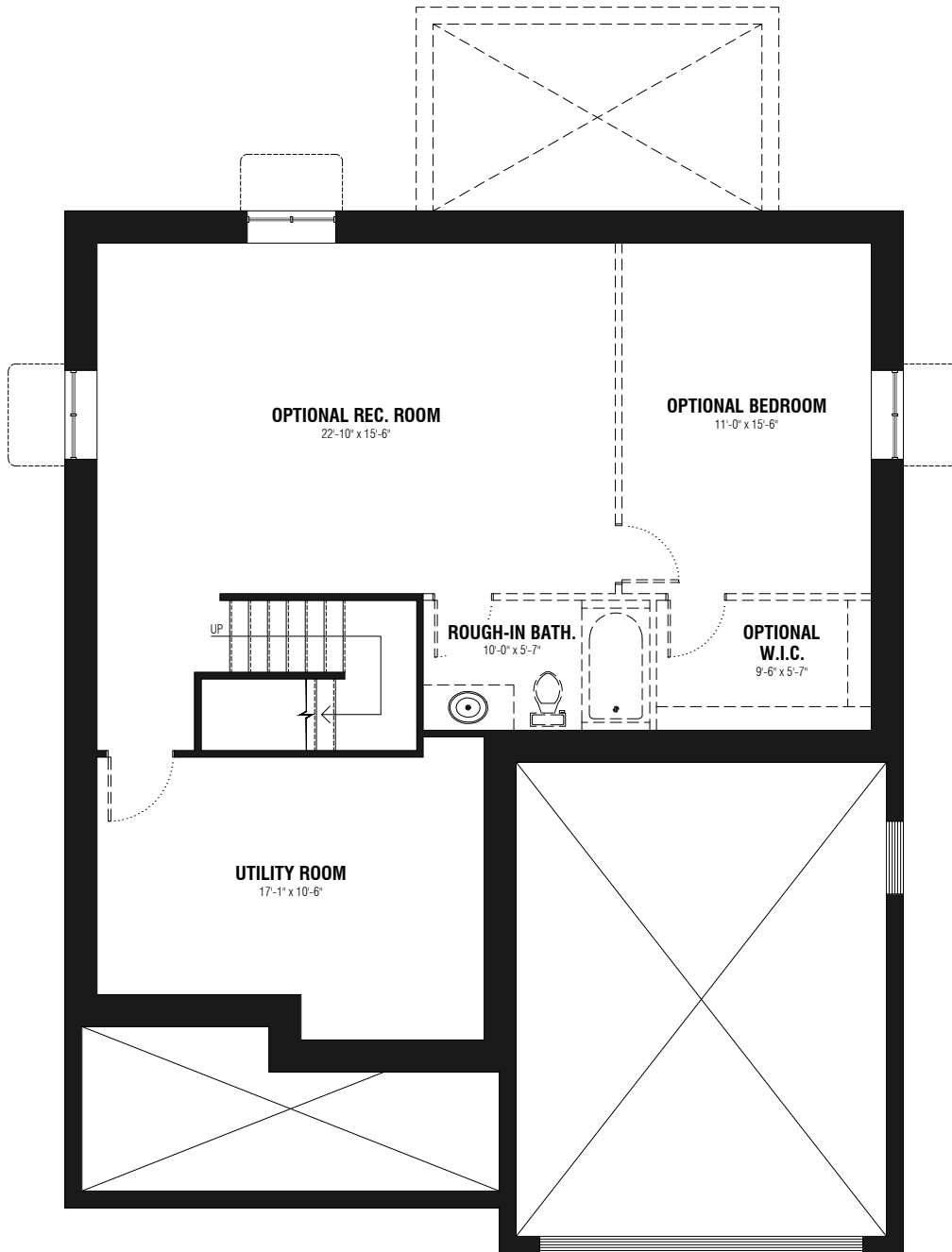
## Second Level Floor Plan (995 sq.ft. / 37'-0" x 55'-0")

This picture is an artists representation. Please refer to a sales representative for upgraded options. This plan and any pricing is the property of DHP Homes. They are not to be duplicated in any way. Plans and specifications are approximate, and are subject to change without notice.

Copyright 2022



[dphomes.com](http://dphomes.com) | 519-633-8820



# INGLEWOOD III

## Lower Level Floor Plan

(Opt. 750 sq.ft. / 37'-0" x 55'-0")

This picture is an artists representation. Please refer to a sales representative for upgraded options. This plan and any pricing is the property of DHP Homes. They are not to be duplicated in any way. Plans and specifications are approximate, and are subject to change without notice.

Copyright 2022



[dphomes.com](http://dphomes.com) | 519-633-8820