



THE BENSON

2,728 SQ.FT. | 40'-0" x 46'-0"

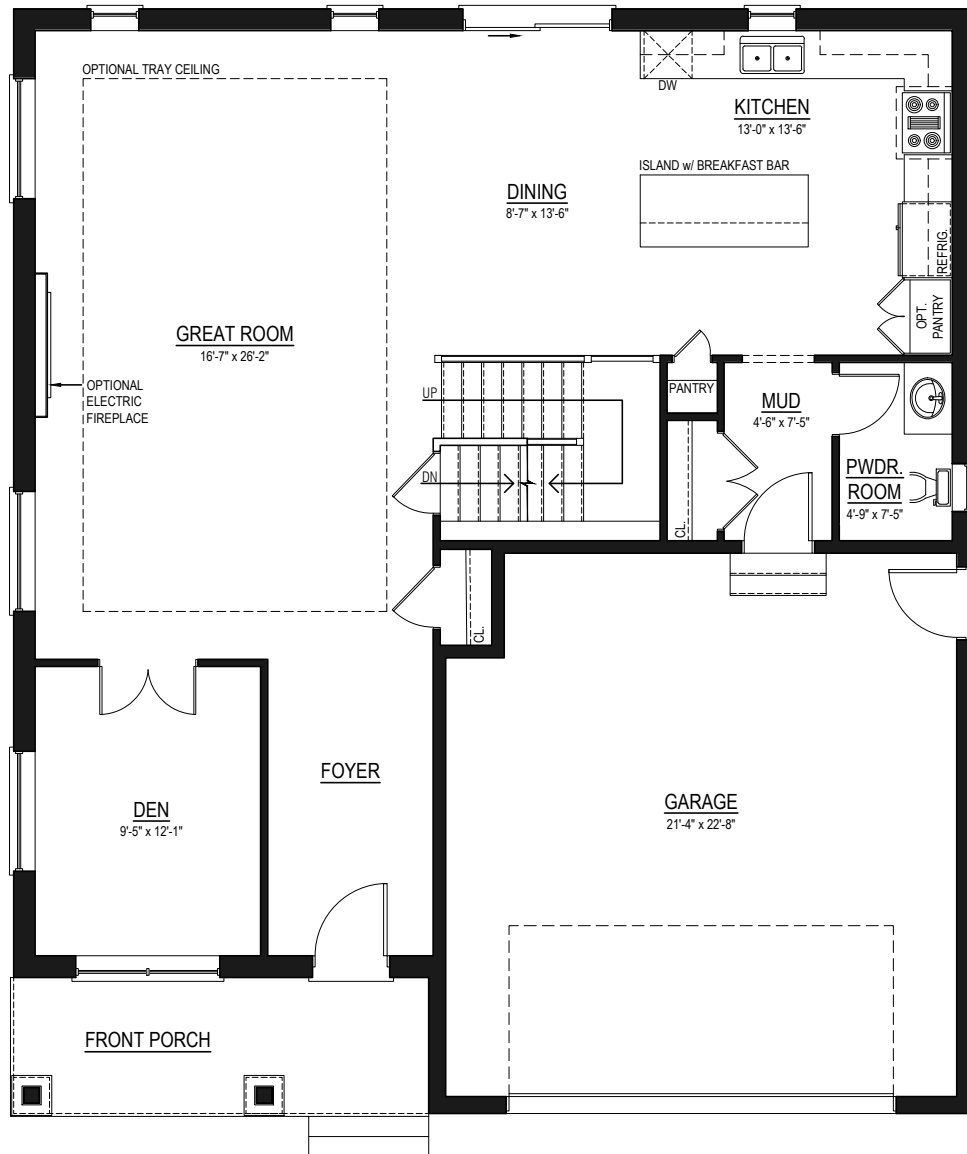
2 4 2.5 2

THIS PICTURE IS AN ARTISTS REPRESENTATION. PLEASE REFER TO A SALES REPRESENTATIVE FOR UPGRADED OPTIONS. THIS PLAN AND ANY PRICING IS THE PROPERTY OF DHP HOMES. THEY ARE NOT TO BE DUPLICATED IN ANY WAY. PLANS AND SPECIFICATIONS ARE APPROXIMATE, AND ARE SUBJECT TO CHANGE WITHOUT NOTICE.



DHP HOMES

ESTABLISHED 1988



THE BENSON

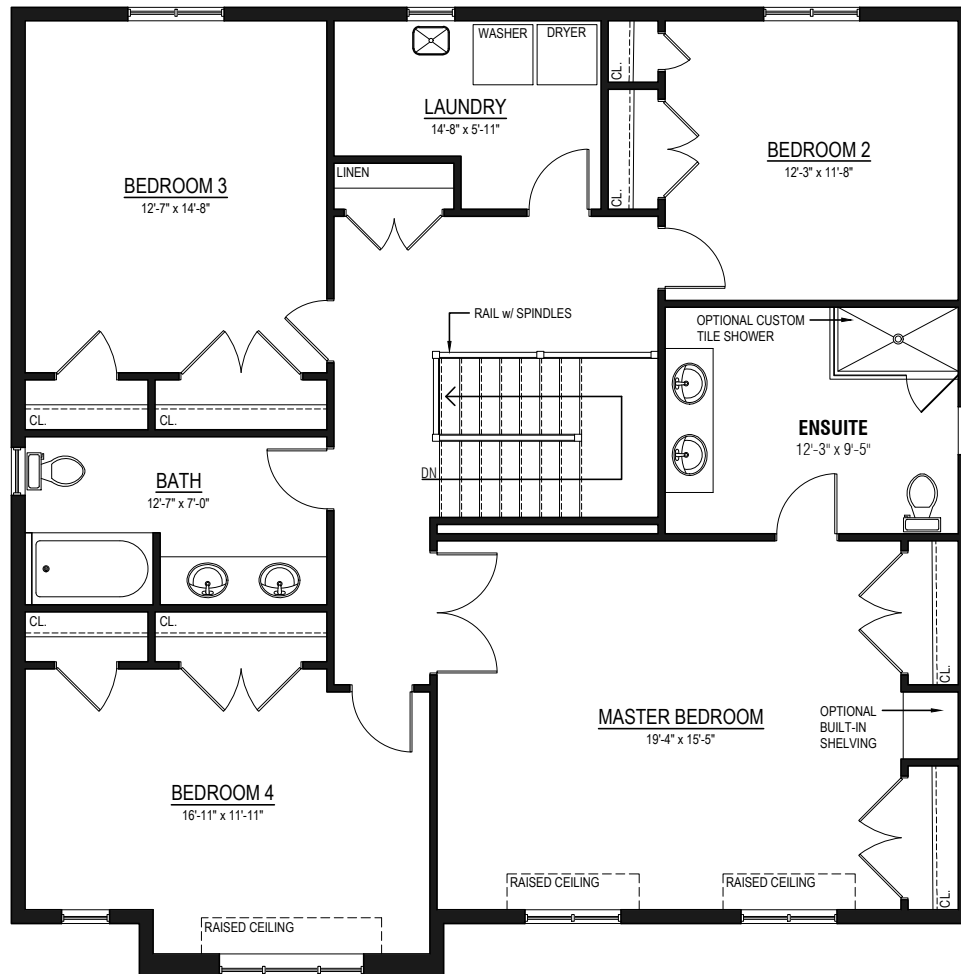
1,236 SQ.FT.

THIS PICTURE IS AN ARTIST'S REPRESENTATION. PLEASE REFER TO A SALES REPRESENTATIVE FOR UPGRADED OPTIONS. THIS PLAN AND ANY PRICING IS THE PROPERTY OF DHP HOMES. THEY ARE NOT TO BE DUPLICATED IN ANY WAY. PLANS AND SPECIFICATIONS ARE APPROXIMATE, AND ARE SUBJECT TO CHANGE WITHOUT NOTICE.



DHP HOMES

ESTABLISHED 1988



THE BENSON

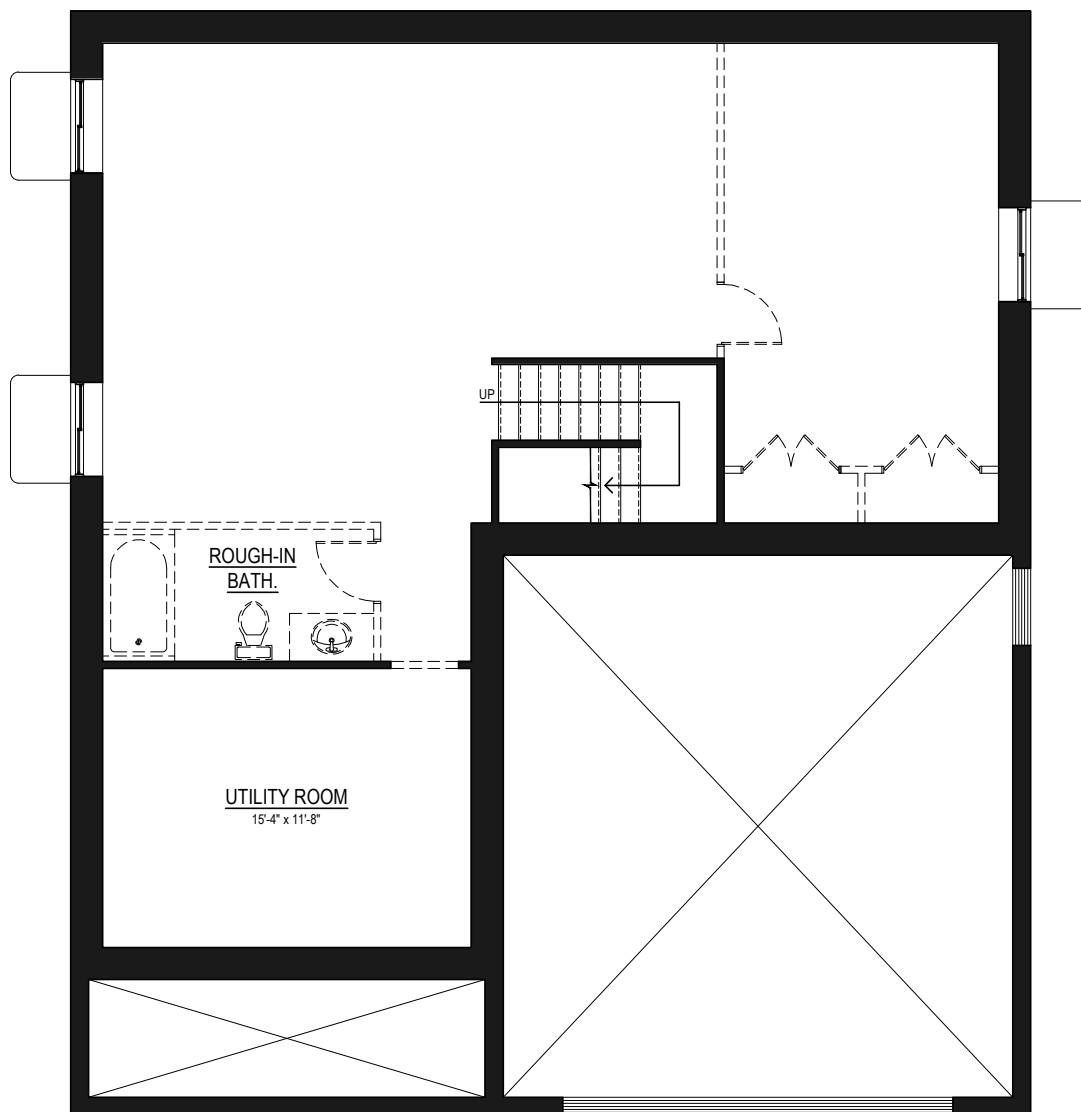
1,492 SQ.FT.

THIS PICTURE IS AN ARTISTS REPRESENTATION. PLEASE REFER TO A SALES REPRESENTATIVE FOR UPGRADED OPTIONS. THIS PLAN AND ANY PRICING IS THE PROPERTY OF DHP HOMES. THEY ARE NOT TO BE DUPLICATED IN ANY WAY. PLANS AND SPECIFICATIONS ARE APPROXIMATE, AND ARE SUBJECT TO CHANGE WITHOUT NOTICE.



DHP HOMES

ESTABLISHED 1988



THE BENSON

827 SQ.FT. (OPTIONAL)

THIS PICTURE IS AN ARTIST'S REPRESENTATION. PLEASE REFER TO A SALES REPRESENTATIVE FOR UPGRADED OPTIONS. THIS PLAN AND ANY PRICING IS THE PROPERTY OF DHP HOMES. THEY ARE NOT TO BE DUPLICATED IN ANY WAY. PLANS AND SPECIFICATIONS ARE APPROXIMATE, AND ARE SUBJECT TO CHANGE WITHOUT NOTICE.



DHP HOMES

ESTABLISHED 1988