



THE CHESTNUT

2,158 SQ.FT. | 32'-0" x 54'-10"

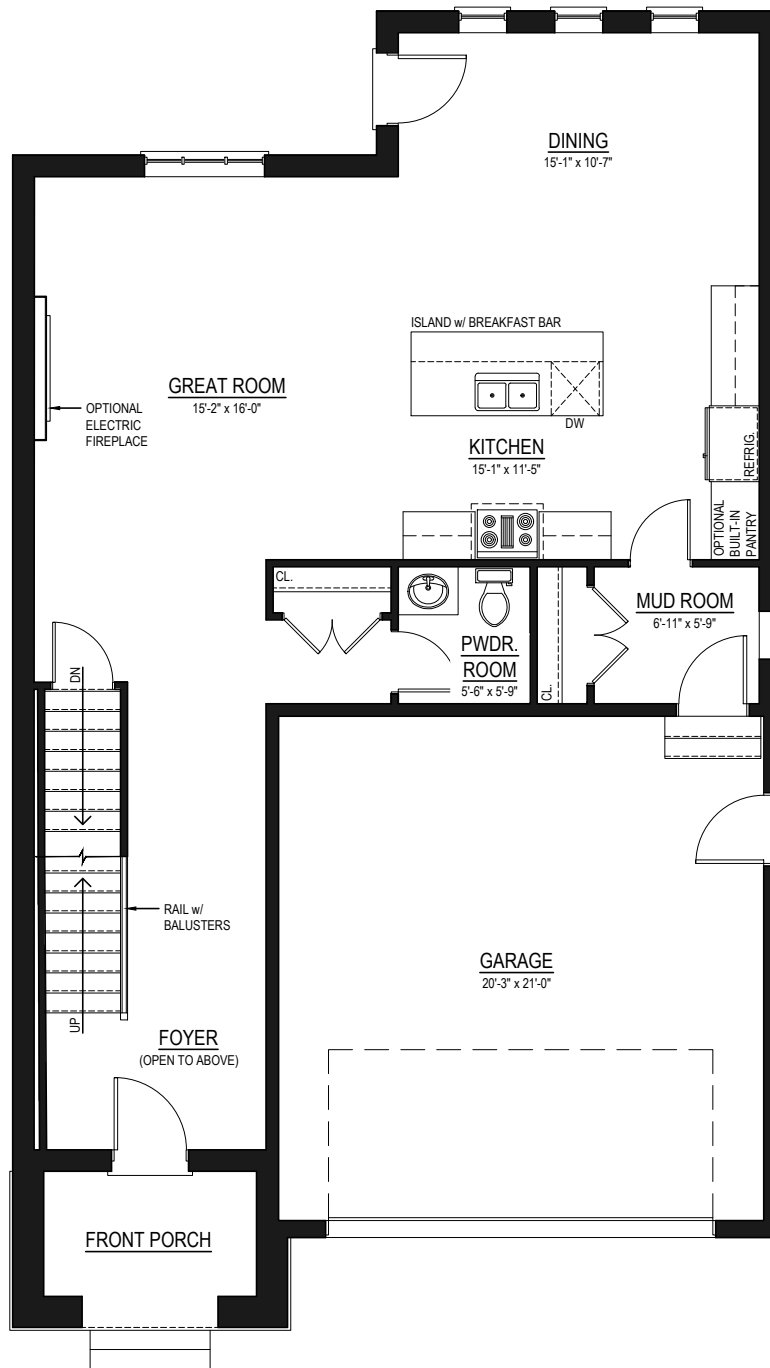
2 4 2.5 2

THIS PICTURE IS AN ARTISTS REPRESENTATION. PLEASE REFER TO A SALES REPRESENTATIVE FOR UPGRADED OPTIONS. THIS PLAN AND ANY PRICING IS THE PROPERTY OF DHP HOMES. THEY ARE NOT TO BE DUPLICATED IN ANY WAY. PLANS AND SPECIFICATIONS ARE APPROXIMATE, AND ARE SUBJECT TO CHANGE WITHOUT NOTICE.



DHP HOMES

ESTABLISHED 1988



THE CHESTNUT

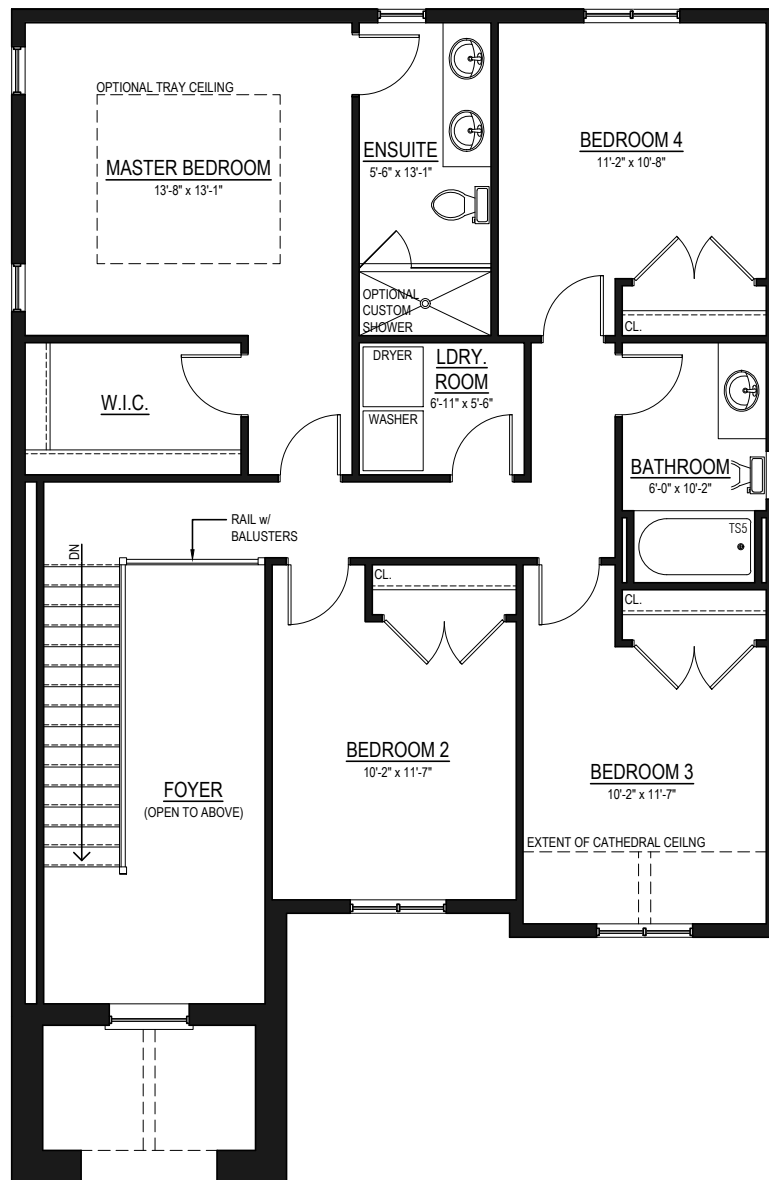
1,060 SQ.FT.

THIS PICTURE IS AN ARTIST'S REPRESENTATION. PLEASE REFER TO A SALES REPRESENTATIVE FOR UPGRADED OPTIONS. THIS PLAN AND ANY PRICING IS THE PROPERTY OF DHP HOMES. THEY ARE NOT TO BE DUPLICATED IN ANY WAY. PLANS AND SPECIFICATIONS ARE APPROXIMATE, AND ARE SUBJECT TO CHANGE WITHOUT NOTICE.



DHP HOMES

ESTABLISHED 1988



THE CHESTNUT

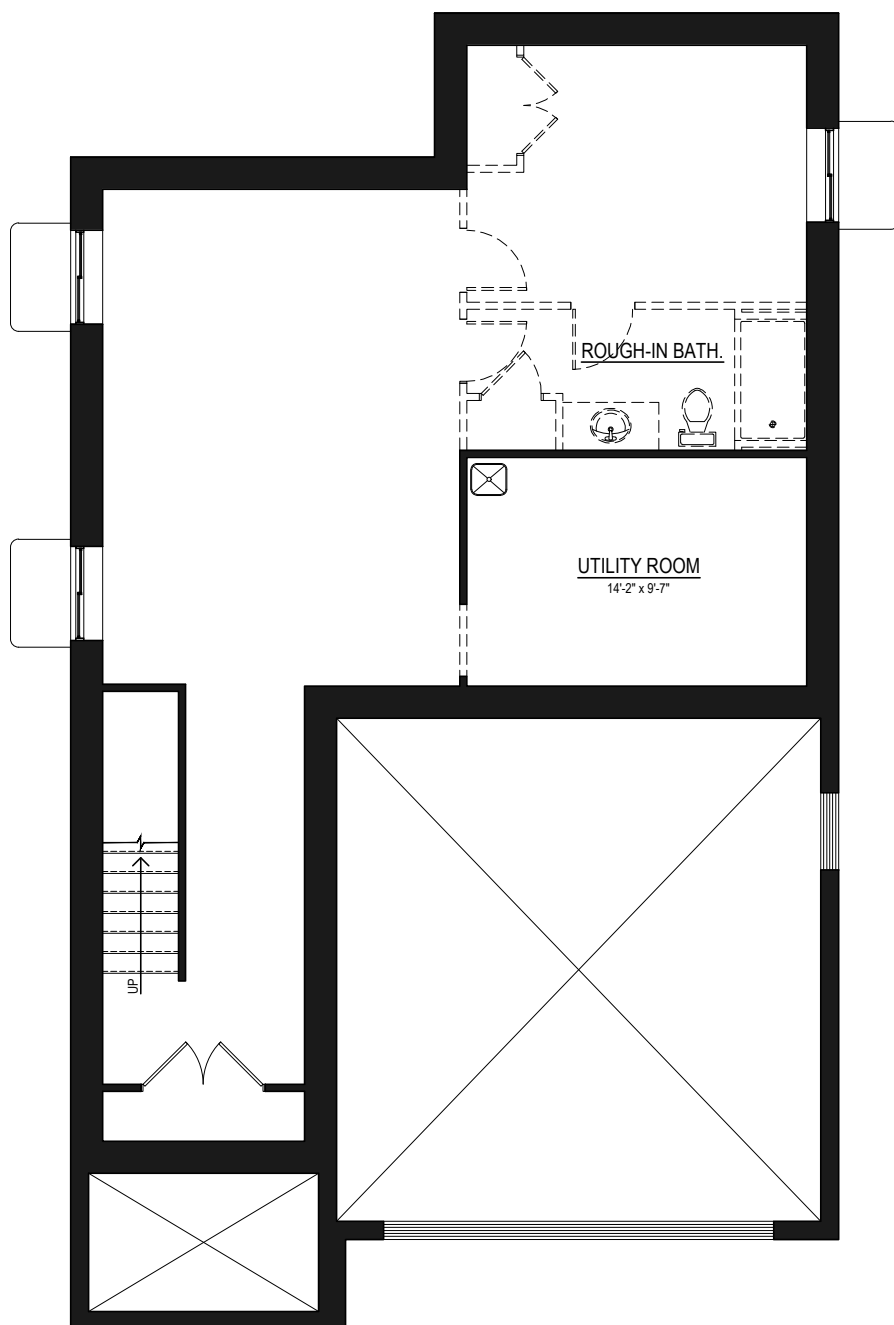
1,098 SQ.FT.

THIS PICTURE IS AN ARTIST'S REPRESENTATION. PLEASE REFER TO A SALES REPRESENTATIVE FOR UPGRADED OPTIONS. THIS PLAN AND ANY PRICING IS THE PROPERTY OF DHP HOMES. THEY ARE NOT TO BE DUPLICATED IN ANY WAY. PLANS AND SPECIFICATIONS ARE APPROXIMATE, AND ARE SUBJECT TO CHANGE WITHOUT NOTICE.



DHP HOMES

ESTABLISHED 1988



THE CHESTNUT

722 SQ.FT. (OPTIONAL)

THIS PICTURE IS AN ARTISTS REPRESENTATION. PLEASE REFER TO A SALES REPRESENTATIVE FOR UPGRADED OPTIONS. THIS PLAN AND ANY PRICING IS THE PROPERTY OF DHP HOMES. THEY ARE NOT TO BE DUPLICATED IN ANY WAY. PLANS AND SPECIFICATIONS ARE APPROXIMATE, AND ARE SUBJECT TO CHANGE WITHOUT NOTICE.



DHP HOMES

ESTABLISHED 1988