



# THE SCOTTSDALE

2,174 SQ.FT. | 40'-0" x 40'-8"

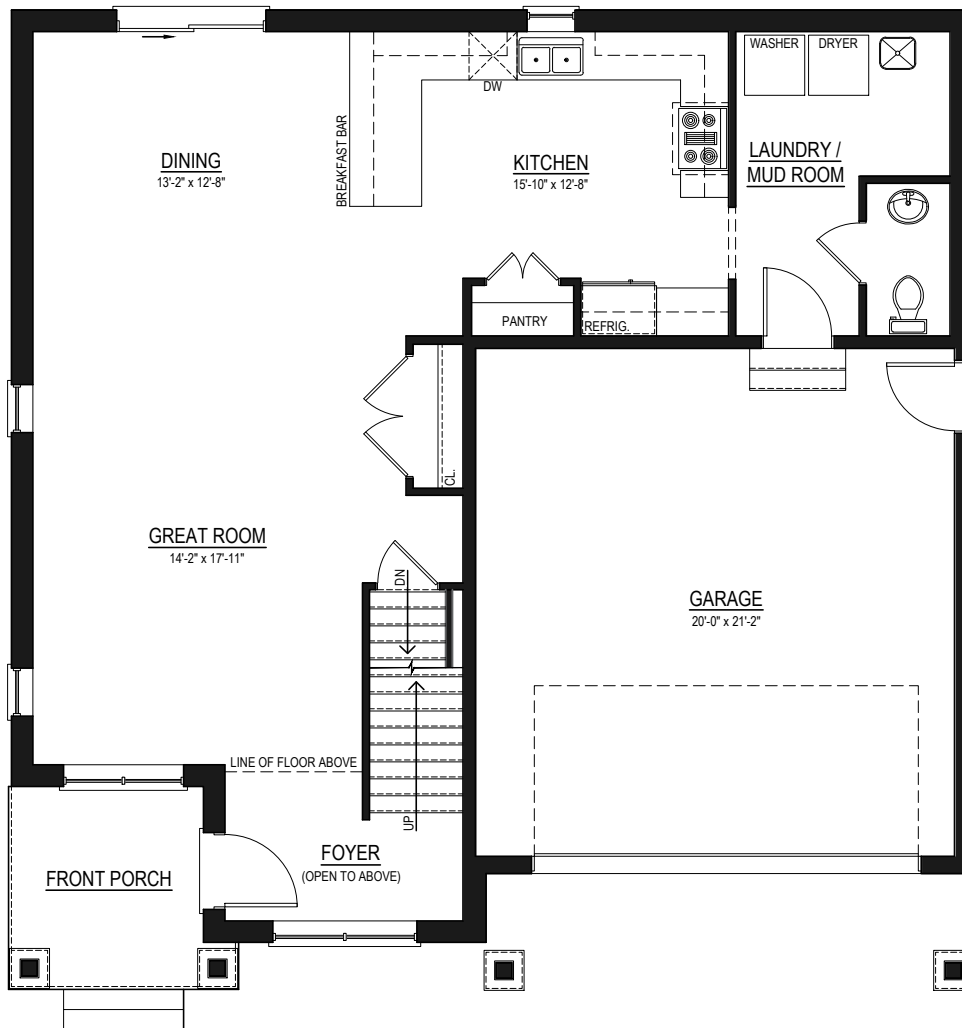
2 4 2.5 2

THIS PICTURE IS AN ARTIST'S REPRESENTATION. PLEASE REFER TO A SALES REPRESENTATIVE FOR UPGRADED OPTIONS. THIS PLAN AND ANY PRICING IS THE PROPERTY OF DHP HOMES. THEY ARE NOT TO BE DUPLICATED IN ANY WAY. PLANS AND SPECIFICATIONS ARE APPROXIMATE, AND ARE SUBJECT TO CHANGE WITHOUT NOTICE.



**DHP HOMES**

ESTABLISHED 1988



# THE SCOTTSDALE

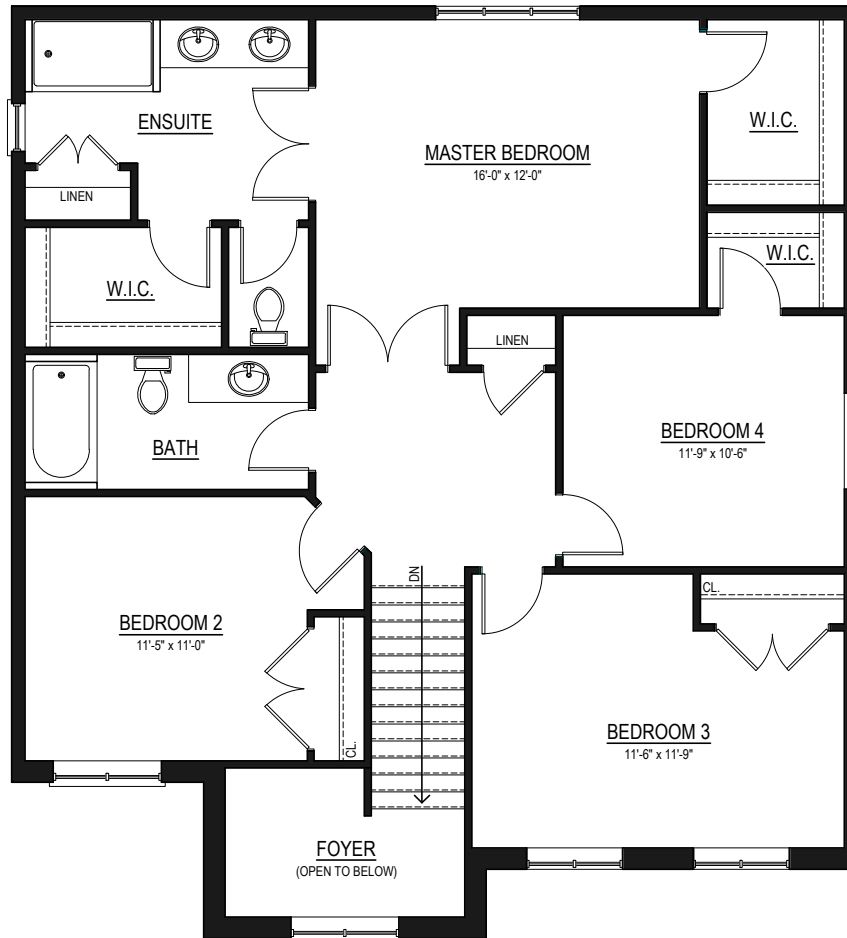
992 SQ.FT.

THIS PICTURE IS AN ARTIST'S REPRESENTATION. PLEASE REFER TO A SALES REPRESENTATIVE FOR UPGRADED OPTIONS. THIS PLAN AND ANY PRICING IS THE PROPERTY OF DHP HOMES. THEY ARE NOT TO BE DUPLICATED IN ANY WAY. PLANS AND SPECIFICATIONS ARE APPROXIMATE, AND ARE SUBJECT TO CHANGE WITHOUT NOTICE.



**DHP HOMES**

ESTABLISHED 1988



# THE SCOTTSDALE

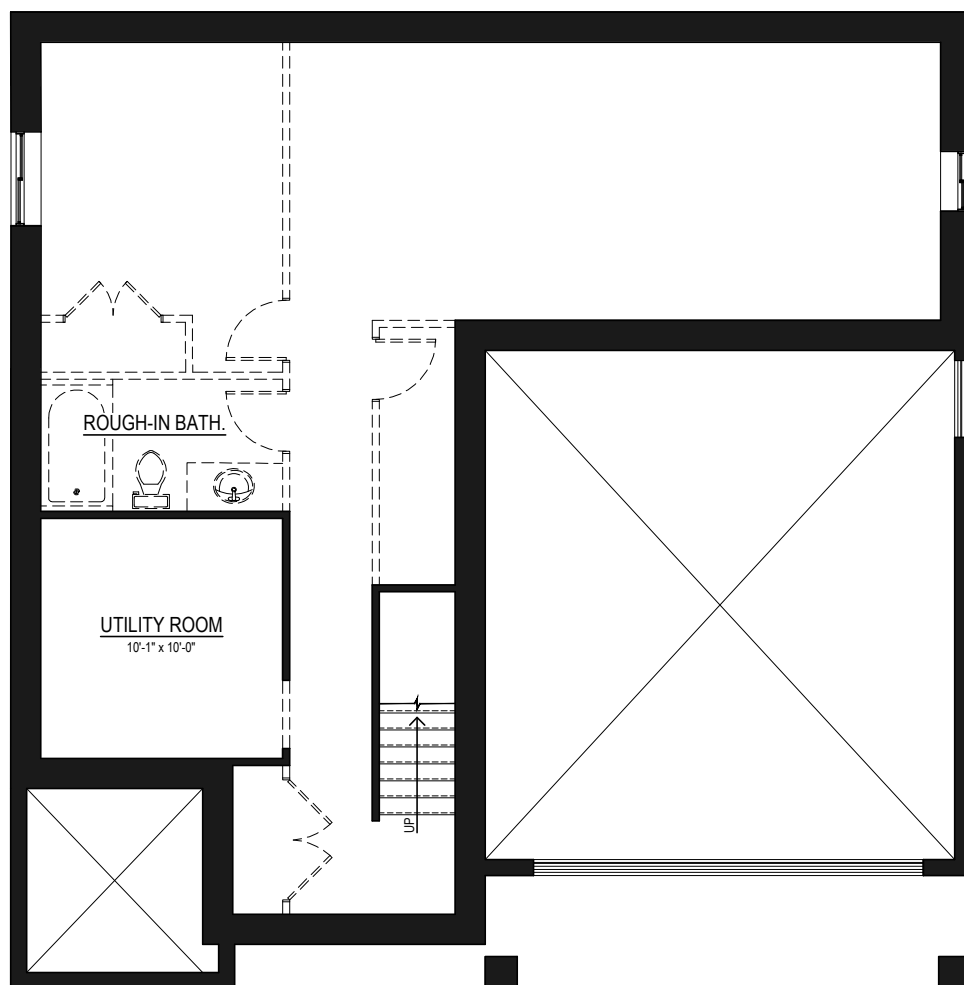
1,182 SQ.FT.

THIS PICTURE IS AN ARTISTS REPRESENTATION. PLEASE REFER TO A SALES REPRESENTATIVE FOR UPGRADED OPTIONS. THIS PLAN AND ANY PRICING IS THE PROPERTY OF DHP HOMES. THEY ARE NOT TO BE DUPLICATED IN ANY WAY. PLANS AND SPECIFICATIONS ARE APPROXIMATE, AND ARE SUBJECT TO CHANGE WITHOUT NOTICE.



**DHP HOMES**

ESTABLISHED 1988



# THE SCOTTSDALE

752 SQ.FT. (OPTIONAL)

THIS PICTURE IS AN ARTIST'S REPRESENTATION. PLEASE REFER TO A SALES REPRESENTATIVE FOR UPGRADED OPTIONS. THIS PLAN AND ANY PRICING IS THE PROPERTY OF DHP HOMES. THEY ARE NOT TO BE DUPLICATED IN ANY WAY. PLANS AND SPECIFICATIONS ARE APPROXIMATE, AND ARE SUBJECT TO CHANGE WITHOUT NOTICE.



**DHP HOMES**

ESTABLISHED 1988