






THE GLENGOWAN

x,xxx SQ.FT. | 54'-11" x 63'-7" | 1  3  2  2 

THIS PICTURE IS AN ARTISTS REPRESENTATION. PLEASE REFER TO A SALES REPRESENTATIVE FOR UPGRADED OPTIONS. THIS PLAN AND ANY PRICING IS THE PROPERTY OF DHP HOMES. THEY ARE NOT TO BE DUPLICATED IN ANY WAY. PLANS AND SPECIFICATIONS ARE APPROXIMATE, AND ARE SUBJECT TO CHANGE WITHOUT NOTICE.



DHP HOMES

ESTABLISHED 1988



THE GLENGOWAN

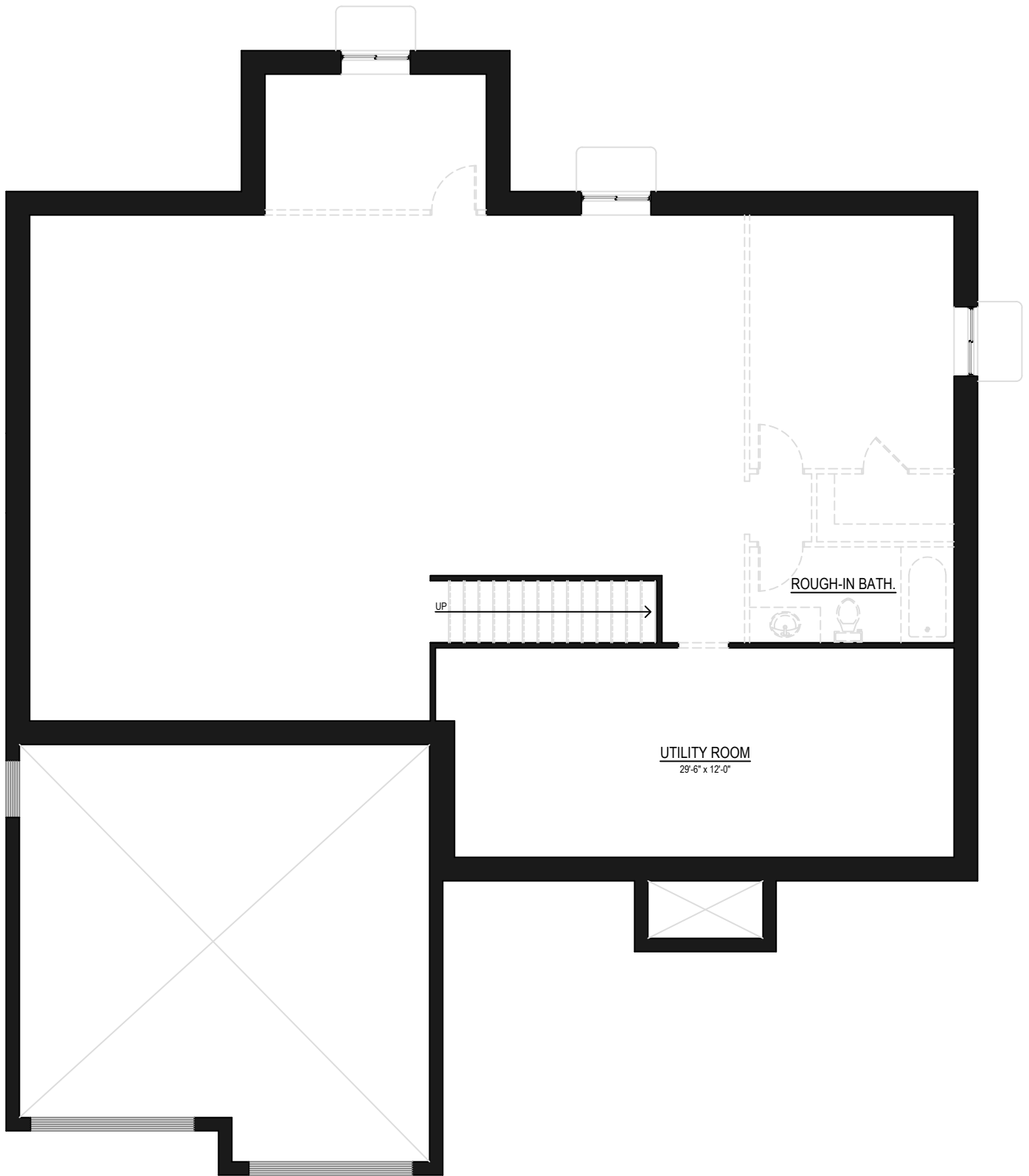
2,075 SQ.FT.

THIS PICTURE IS AN ARTIST'S REPRESENTATION. PLEASE REFER TO A SALES REPRESENTATIVE FOR UPGRADED OPTIONS. THIS PLAN AND ANY PRICING IS THE PROPERTY OF DHP HOMES. THEY ARE NOT TO BE DUPLICATED IN ANY WAY. PLANS AND SPECIFICATIONS ARE APPROXIMATE, AND ARE SUBJECT TO CHANGE WITHOUT NOTICE.



DHP HOMES

ESTABLISHED 1988



THE GLENGOWAN

1,515 SQ.FT. (OPTIONAL)

THIS PICTURE IS AN ARTIST'S REPRESENTATION. PLEASE REFER TO A SALES REPRESENTATIVE FOR UPGRADED OPTIONS. THIS PLAN AND ANY PRICING IS THE PROPERTY OF DHP HOMES. THEY ARE NOT TO BE DUPLICATED IN ANY WAY. PLANS AND SPECIFICATIONS ARE APPROXIMATE, AND ARE SUBJECT TO CHANGE WITHOUT NOTICE.



DHP HOMES

ESTABLISHED 1988